

CITY OF HOUSTON

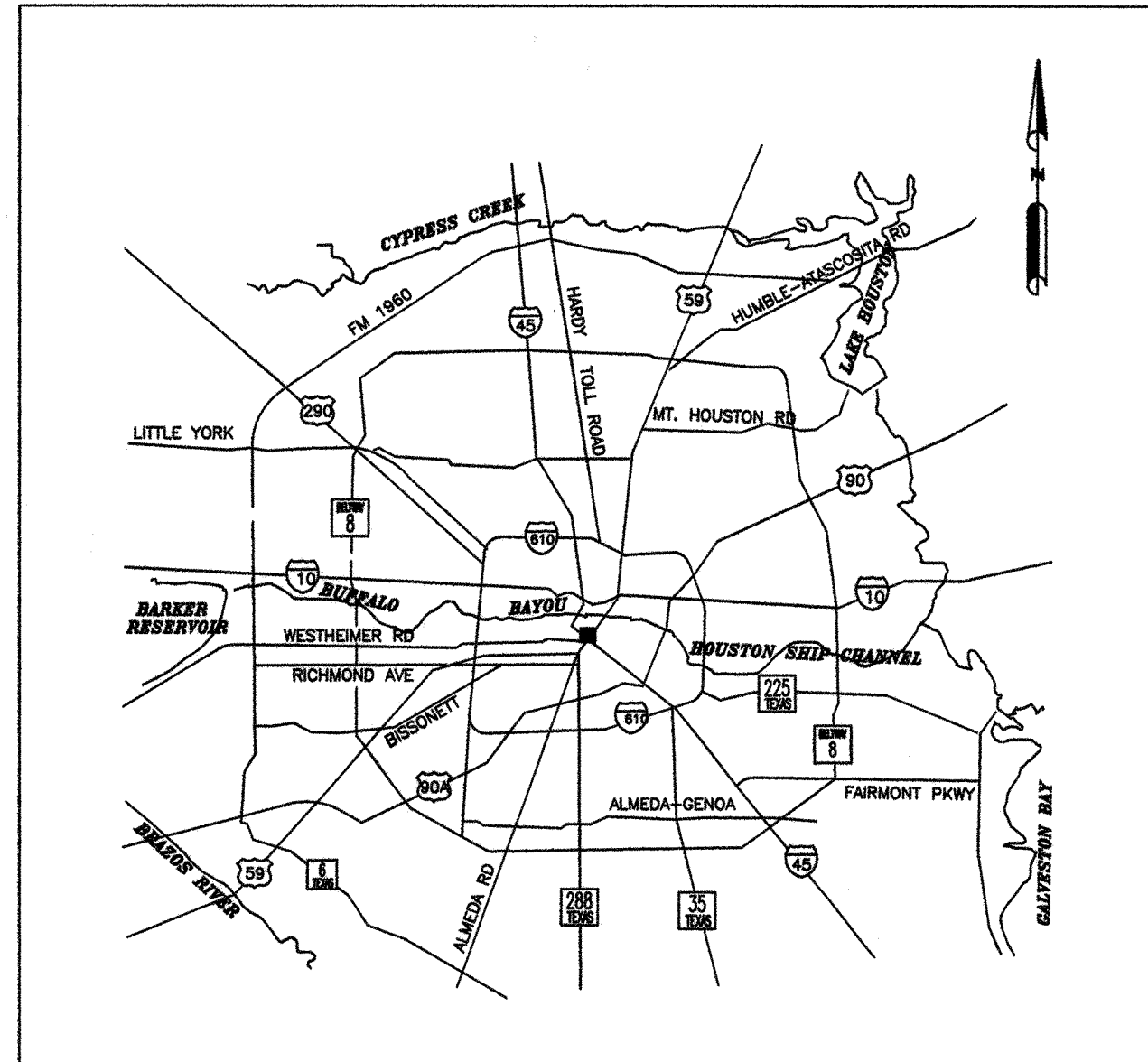
DEPARTMENT OF PUBLIC WORKS AND ENGINEERING

ENGINEERING AND CONSTRUCTION DIVISION

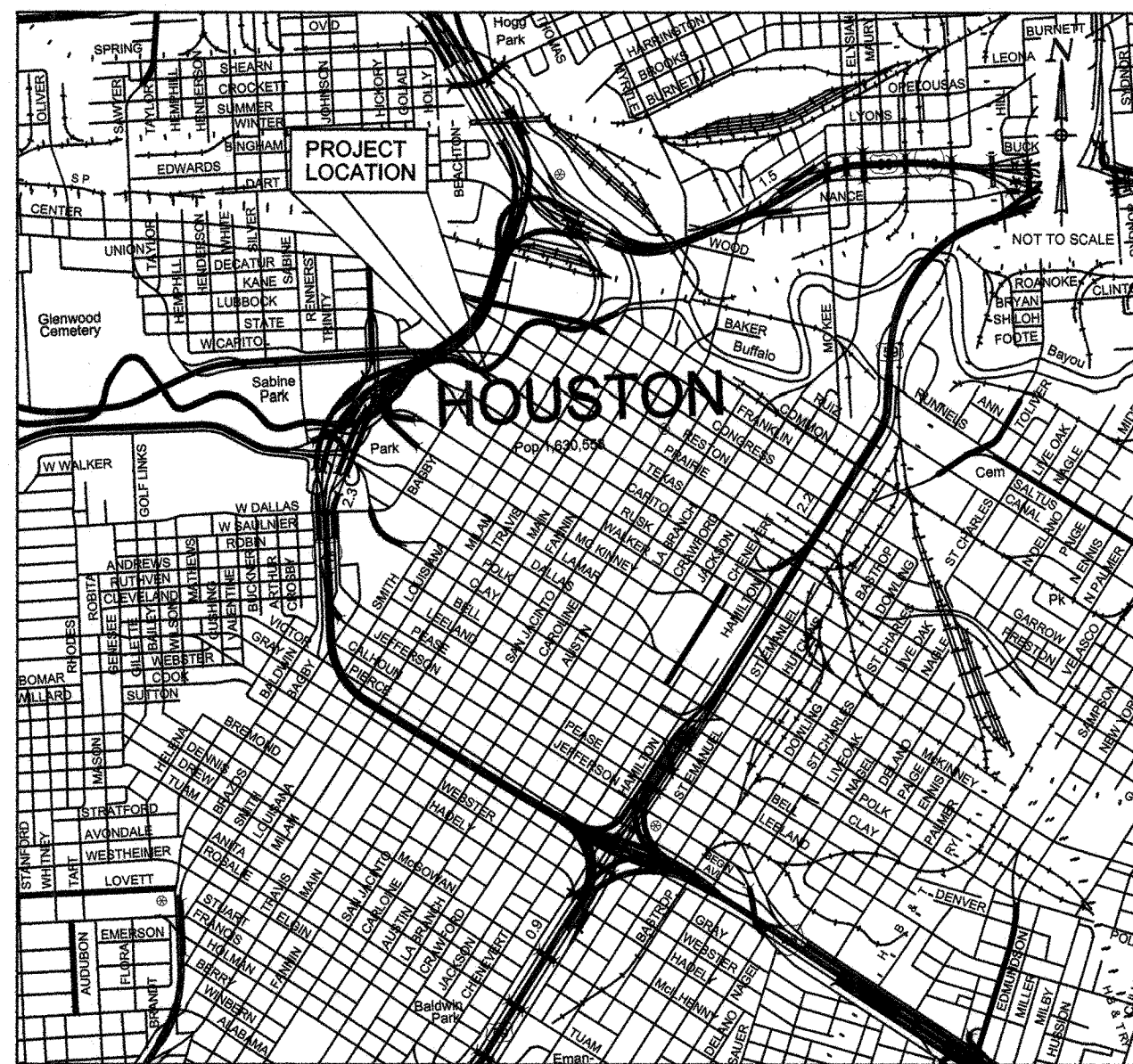
DOWNTOWN CENTERLINE REFERENCE ROD SYSTEM

REVITALIZATION

GFS NO. N-0645-04-3

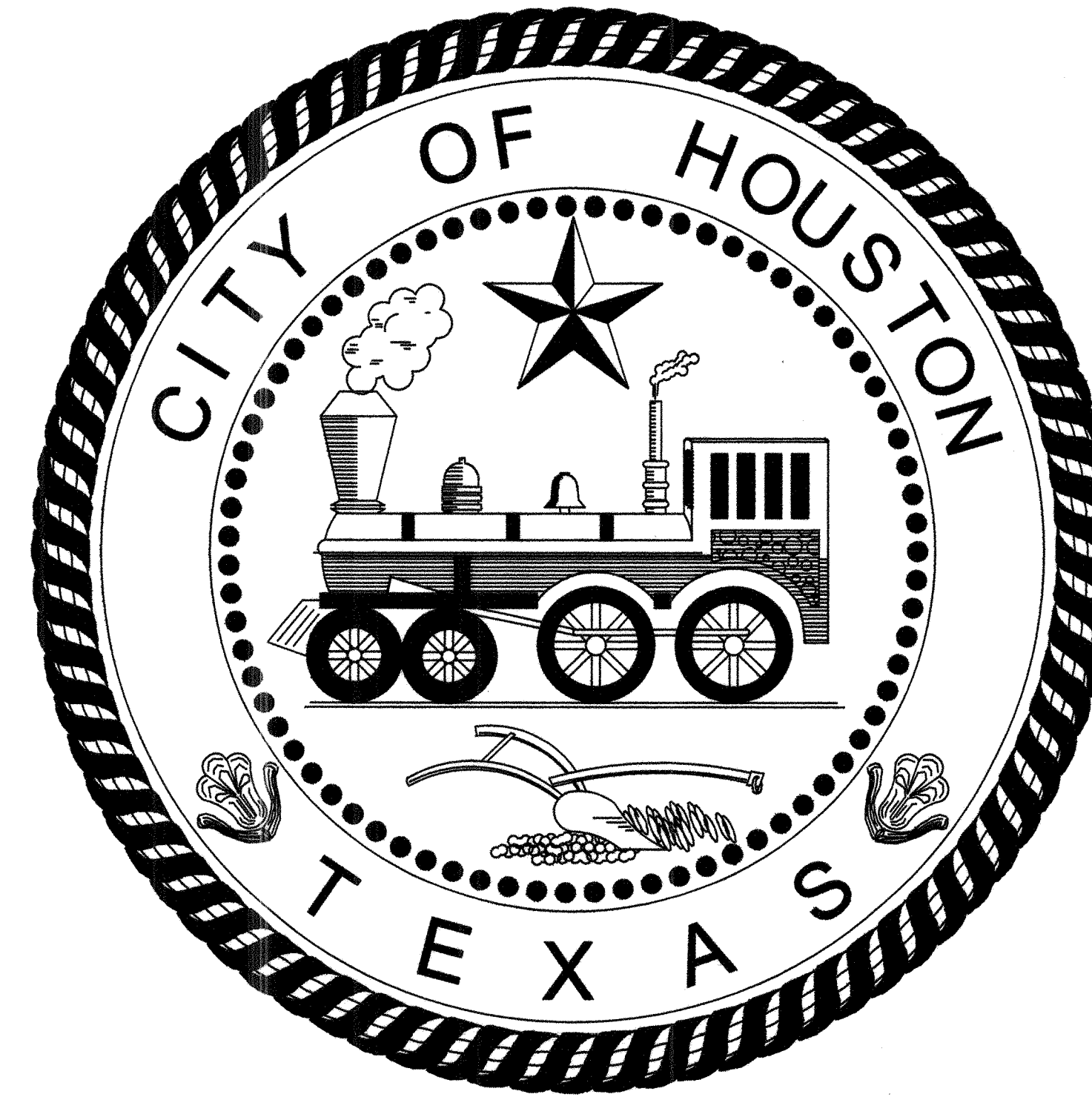


LOCATION MAP



VICINITY MAP

KEY MAP NO(s). 493 L, M, Q, R
GIMS MAP NO(s). 5357 B
5457 A
5357 D
5457 C
5358 B
5458 A



MAYOR
BILL WHITE
CONTROLLER
ANNISE D. PARKER

DISTRICT
COUNCIL MEMBERS

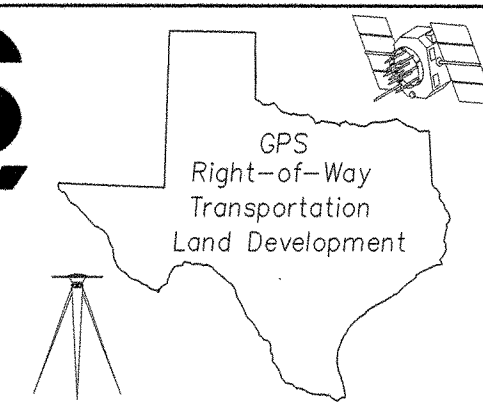
TONI LAWRENCE DISTRICT A	JARVIS JOHNSON DISTRICT B	ANNE CLUTTERBUCK DISTRICT C
WANDA ADAMS DISTRICT D	MIKE SULLIVAN DISTRICT E	M. J. KHAN, P.E. DISTRICT F
PAM HOLM DISTRICT G	ADRIAN GARCIA DISTRICT H	JAMES G. RODRIGUEZ DISTRICT I

COUNCIL MEMBERS
AT-LARGE

PETER BROWN POSITION 1	SUE LOVELL POSITION 2
MELISSA NORIEGA POSITION 3	RONALD GREEN POSITION 4
JOLANDA "JO" JONES POSITION 5	

RODS
Surveying, Inc.

6810 LEE ROAD
SPRING, TEXAS 77379
TEL (281) 257-4020
FAX (281) 257-4021



SURVEYED BY: L.A.
FB NO. P-5428

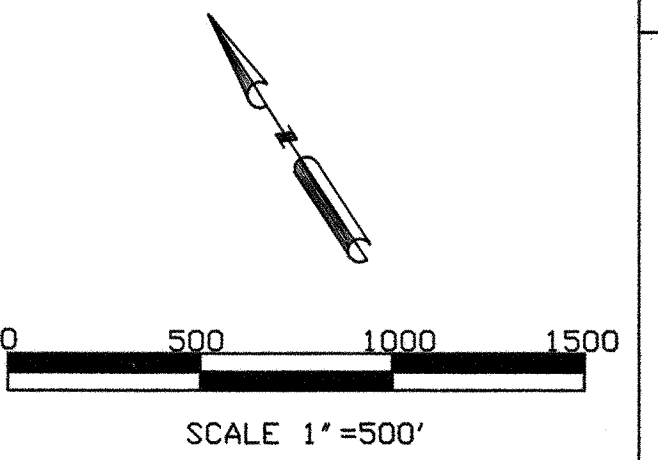
CITY ENGINEER _____ DATE _____

CITY SURVEYOR _____ DATE _____

DIRECTOR OF PUBLIC WORKS AND ENGINEERING _____ DATE _____



TDLR EABPR _____



- NOTES:
1. ALL COORDINATES SHOWN HEREON ARE EXPRESSED IN U.S. SURVEY FEET.
 2. ALL POINTS SHOWN HEREON ARE REFERENCED TO THE TEXAS COORDINATE SYSTEM, SOUTH CENTRAL ZONE, NORTH AMERICAN DATUM OF 1983, CORRS 96 (EPOCH 2002.00).
 3. THE PRIMARY CONTROL POINTS USED FOR THIS PROJECT ARE CITY OF HOUSTON COOPERATIVE CORRS MONUMENTS AS FOLLOWS:
COH2, NGS PID# DF8773 N=13,793,560.96 E=3,108,315.43
COH3, NGS PID# DF8775 N=13,800,460.33 E=3,155,320.54
COH4, NGS PID# DF8777 N=13,851,729.27 E=3,168,870.88
 4. ALL MEASUREMENTS MADE WITH CONVENTIONAL SURVEYING EQUIPMENT WERE REDUCED TO GRID EMPLOYING A COMBINED SCALE FACTOR OF 0.999891800.
 5. THESE POINTS WERE SET AS ADDITIONAL CONTROL POINTS FOR THIS PROJECT.

LEGEND
 *MONUMENT NOT RECOVERED IN FIELD. POSITION CALCULATED FROM RECOVERED COH REFERENCE POINTS.

I, JACK CHILES, HEREBY CERTIFY THAT THIS DRAWING CORRECTLY REPRESENTS A SURVEY MADE ON THE GROUND BY ME, OR UNDER MY SUPERVISION.



RODS
 Surveying, Inc.
 6810 LEE ROAD
 SPRING, TEXAS 77379
 TEL (281) 257-4020
 FAX (281) 257-4021

PRIVATE UTILITY LINES SHOWN

RELIANT ENERGY ENTEX, INC.
SWBT CO. VALID FOR ONE YEAR APPROVED ONLY FOR UNDERGROUND CONDUIT FACILITIES UNLESS NOTED.
RELIANT ENERGY HOUSTON LIGHTING & POWER CO. APPROVED ONLY FOR CROSSING UNDERGROUND DUCTLINES UNLESS NOTED. VALID AT TIME OF REVIEW ONLY.
CABLE COMPANY

RODS SURVEY, INC.
 6810 LEE RD.
 SPRING, TX 77379
 TEL: 281-257-4020

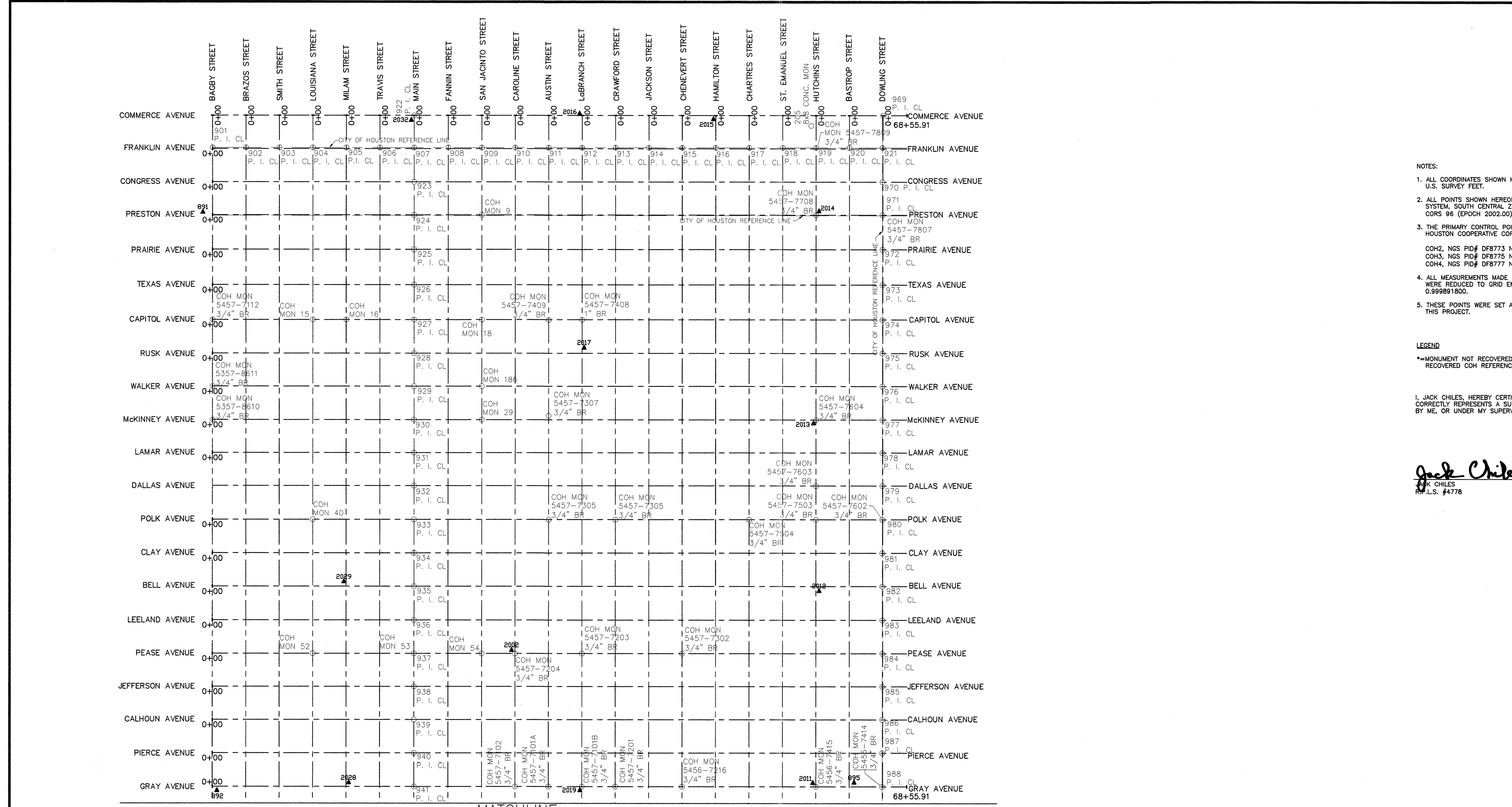
SURVEYED BY: L.A.
 FB NO. P-5428

CITY OF HOUSTON
 DEPARTMENT OF PUBLIC WORKS AND ENGINEERING

DOWNTOWN CENTERLINE REFERENCE ROD SYSTEM REVITALIZATION

SHEET NO. 1

GF5 NUMBER	N-0645-04-3
DRAWING SCALE	N.T.S.
CITY OF HOUSTON PW	46402
SHEET NO. 2 OF 9	



CONTROL POINTS

ORIG. COH-MON	NO.	Northing	Easting	Description
4	5457-7610	13841870.988	3124810.289	COH MGN 4 3/4" BR
5	5457-7809	13840796.740	3126473.479	COH MGN 5 3/4" BR
9		13842028.733	3123337.159	COH MGN 9 3/4" BR
11		13841307.828	3124445.475	COH MGN 11 3/4" BR
12	5457-7708	13840233.460	3126108.874	COH MGN 12 3/4" BR
13	5457-7807	13839977.930	3126659.708	COH MGN 13 3/4" BR
15		13842069.236	3121379.460	COH MGN 15 3/4" BR
16		13841890.121	3121656.791	COH MGN 16 3/4" BR
18		13841163.828	3122781.298	COH MGN 18 3/4" BR
19	5457-7409	13840802.984	3123335.636	COH MGN 19 3/4" BR
20		13840331.780	3122243.870	COH MGN 20 3/4" BR
29	5457-7307	13840007.292	3122819.837	COH MGN 29 3/4" BR
34		13841163.828	3122515.729	COH MGN 34 3/4" BR
37	5457-7703	13837624.722	3126124.930	COH MGN 37 3/4" BR
38	5457-7802	13837466.590	3126679.327	COH MGN 38 3/4" BR
39	5457-7902	13837108.430	3127233.634	COH MGN 39 3/4" BR
40		13840405.834	3120304.436	COH MGN 40 3/4" BR
43	5457-7305	13839139.450	3122261.674	COH MGN 43 3/4" BR
45	5457-7503	13837709.371	3124478.449	COH MGN 45 3/4" BR
46	5457-7602	13837353.980	3125028.696	COH MGN 46 3/4" BR
48	5457-7702	13836992.980	3125587.497	COH MGN 48 3/4" BR
49	5457-7701	13836625.020	3126141.979	COH MGN 49 3/4" BR
52		13839297.222	3119888.138	COH MGN 52 3/4" BR
53		13838754.896	3120428.127	COH MGN 53 3/4" BR
54		13838391.671	3120990.054	COH MGN 54 3/4" BR
56	5457-7302	13837317.020	3122653.125	COH MGN 56 3/4" BR
65	5457-7101A	13836924.903	3120827.819	COH MGN 65 3/4" BR
67	5456-7216	13836208.215	3121936.718	COH MGN 67 3/4" BR
68	5456-7415	13835491.683	3123043.344	COH MGN 68 3/4" BR
69	5456-7414	13835136.620	3123395.617	COH MGN 69 3/4" BR
70		13836397.432	3121890.422	COH MGN 70 3/4" BR
72	5356-8615	13835664.590	3120026.753	COH MGN 72 3/4" BR
73	5457-7115	13835306.239	3120583.428	COH MGN 73 3/4" BR
74	5456-7114	13834968.609	3121135.433	COH MGN 74 3/4" BR
82	5356-8611	13833572.765	3120233.635	COH MGN 82 3/4" BR
87	5356-8603	13832940.128	3119638.397	COH MGN 87 3/4" BR
186		13840609.123	3121242.855	COH MGN 186 3/4" BR
197	5457-7201	13835656.568	3121382.120	COH MGN 197 3/4" BR

CONTROL POINTS

ORIG. COH-MON	NO.	Northing	Easting	Description
205	5457-7809	13841007.095	3126582.496	COH MGN 205 8"x8" CONC MKR
242	5457-7112	13842606.810	3120547.746	COH MGN 242 3/4" BR
247	5357-8610	13841774.400	3120010.105	COH MGN 247 3/4" BR
266	5357-8302	13837037.900	3117346.828	COH MGN 266 5/8" BR
267	5356-8215	13835907.623	3116617.640	COH MGN 267 5/8" BR
277	5356-8603	13831430.460	3118893.049	COH MGN 277 3/4" BR
281	5457-8010	13841737.860	3128458.294	COH MGN 281 5/8" BR
298	5457-7603	13837996.620	3124657.518	COH MGN 298 3/4" BR
300	5356-8616	13836374.981	3120472.391	COH MGN 300 3/4" BR
301	5456-7113	13834945.070	3121026.714	COH MGN 301 3/4" BR
302	5456-7215	13835358.168	3121581.121	COH MGN 302 3/4" BR
305	5356-8514	13834996.184	3119575.820	COH MGN 305 3/4" BR
308	5456-7113	13834945.070	3121026.714	COH MGN 308 3/4" BR
311	5457-7305	13837833.950	3122813.014	COH MGN 311 3/4" BR
404		13841130.606	3119827.348	COH MGN 404 3/4" BR
409		13834629.630	3119116.630	COH MGN 409 3/4" BR
422	5356-8411	13833600.460	3118680.415	COH MGN 422 1" BR
600	5456-7211	13833554.540	3121793.614	COH MGN 600 3/4" BR
601	5457-7504	13839067.616	3123924.037	COH MGN 601 3/4" BR
608	5456-7409	13832301.958	3123735.910	COH MGN 608 1" BR
614	5356-8408	13832013.530	3118095.295	COH MGN 614 3/4" BR BENT
634	5457-7408	13840626.980	3123613.108	COH MGN 634 1" BR
715	5357-8611	13842051.752	3120189.415	COH MGN 715 3/4" BR
769	5357-8304	13838152.788	3117720.587	COH MGN 769 1" BR
816	5356-8515	13839564.804	3119749.677	COH MGN 816 3/4" BR
817	5357-8405	13839353.767	3120955.227	COH MGN 817 1" BR
818	5457-7102	13837103.620	3120550.611	COH MGN 818 3/4" BR
819	5457-7204	13838212.410	3121267.431	COH MGN 819 3/4" BR
823	5457-7203	13837975.150	3121821.337	COH MGN 823 3/4" BR
830	5456-7101B	13837445.680	3121104.802	COH MGN 830 3/4" BR
825	5456-7116	13836195.514	3120749.338	COH MGN 825 3/4" BR
846	5356-8613	13834808.330	3119853.262	COH MGN 846 3/4" BR

SEE NOTE 5 FOR MONUMENTS 891-896

891	5457-7114	13843542.430	3121037.020	GPS 1 SET BRASS DISK
892	5357-8405	13839647.360	3118036.630	GPS 2 SET BRASS DISK
893	5357-8011	13833873.030	3114913.400	GPS 3 SET BRASS DISK
894	5457-7115	13844548.560	3120669.910	GPS 4 SET BRASS DISK
895	5456-7414	13835382.820	3120384.830	GPS 5 SET BRASS DISK
896	5356-8605	13833294.490	3120112.920	GPS 6 SET BRASS DISK

CONTROL POINTS

CALC PT'S	Northing	Easting	Description
901	13844030.215	3121467.573	CENTERLINE
902	13843951.173	3121744.754	CENTERLINE
903	13843676.131	3122021.934	CENTERLINE
904	13843493.090	3122299.114	CENTERLINE
905	13843313.971	3122576.414	CENTERLINE
906	13843133.787	3122853.614	CENTERLINE
907	13842950.615	3123138.938	CENTERLINE
908	13842767.585	3123422.293	CENTERLINE
909	13842587.538	3123704.099	CENTERLINE
910	13842408.574	3123978.410	CENTERLINE
911	13842229.358	3124255.539	CENTERLINE
912	13842050.492	3124532.448	CENTERLINE
913	13841874.787	3124809.636	CENTERLINE
914	13841692.388	3125086.840	CENTERLINE
915	13841513.330	3125364.047	CENTERLINE
916	13841334.159	3125641.252	CENTERLINE
917	13841154.989	3125918.457	CENTERLINE
918	13840975.937	3126196.003	CENTERLINE
919	13840796.885	3126473.199	CENTERLINE
920	13840614.795	3126750.394	CENTERLINE
921	13840431.410	3127027.509	CENTERLINE
922	13840251.006	3127304.624	CENTERLINE
923	13840066.112	3127582.334	CENTERLINE
924	13839876.996	3127860.780	CENTERLINE
925	13839693.910	3128139.226	CENTERLINE
926	13839510.824	3128417.672	CENTERLINE
927	13839327.738	3128696.118	CENTERLINE
928	13839144.652	3128974.564	CENTERLINE
929	13838961.566	3129253.010	CENTERLINE
930	13838778.480	3129531.456	CENTERLINE
931	13838595.394	3129810.002	CENTERLINE
932	13838412.308	3130088.448	CENTERLINE
933	13838229.222	3130366.894	CENTERLINE
934	13838046.136	3130645.340	CENTERLINE
935	13837863.050	3130923.786	CENTERLINE
936	13837680.000	3131202.232	CENTERLINE
937	13837496.914	3131480.678	CENTERLINE
938	13837313.828	3131759.124	CENTERLINE
939	13837130.742	3132037.570	CENTERLINE
940	13836947.656	3132316.016	CENTERLINE
941	13836764.570	3132594.462	CENTERLINE
942	13836581.484	3132872.908	CENTERLINE

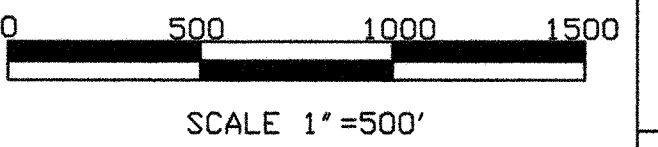
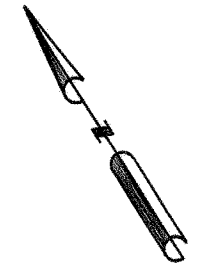
CONTROL POINTS

CALC PT'S	Northing	Easting	Description
943	13836405.769	3118910.273	CENTERLINE
944	13836221.410	3119188.719	CENTERLINE
945	13836037.050	3119467.165	CENTERLINE
946	13835852.690	3119745.611	CENTERLINE
947	13835668.330	3120024.057	CENTERLINE
948	13835483.970	3120302.503	CENTERLINE
949	13835300.610	3120580.949	CENTERLINE
950	13835116.250	3120859.395	CENTERLINE
951	13834931.890	3121137.841	CENTERLINE
952	13834747.530	3121416.287	CENTERLINE
953	13834563.170	3121694.733	CENTERLINE
954	13834378.810	3121973.179	CENTERLINE
955	13834194.450	3122251.625	CENTERLINE
956	13834010.090	3122530.071	CENTERLINE
957	13833825.730	3122808.517	CENTERLINE
958	13833641.370	3123086.963	CENTERLINE
959	13833457.010	3123365.409	CENTERLINE
960	13833272.650	3123643.855	CENTERLINE
961	13833088.290	3123922.301	CENTERLINE
962	13832903.930	3124200.747	CENTERLINE
963	13832719.570	3124479.193	CENTERLINE
964	13832535.210	3124757.639	CENTERLINE
965	13832350.850	3125036.085	CENTERLINE
966	13832166.490	3125314.531	CENTERLINE
967	13831982.130	3125592.977	CENTERLINE
968	13831797.770	3125871.423	CENTERLINE
969	13831613.410	3126149.869	CENTERLINE
970	13831429.050	3126428.315	CENTERLINE
971	13831244.690	3126706.761	CENTERLINE
972	13831060.330	3126985.207	CENTERLINE
973	13830875.970	3127263.653	CENTERLINE
974	13830691.610	3127542.099	CENTERLINE
975	13830507.250	3127820.545	CENTERLINE
976	13830322.890	3128098.991	CENTERLINE
977	13830138.530	3128377.437	CENTERLINE
978	13829954.170	3128655.883	CENTERLINE
979	13829769.810	3128934.329	CENTERLINE
980	13829585.450	3129212.775	CENTERLINE
981	13829401.090	3129491.221	CENTERLINE
982	13829216.730	3129769.667	CENTERLINE
983	13829032.370	3130048.113	CENTERLINE
984	13828848.010	3130326.559	CENTERLINE
985	13828663.650	3130605.005	CENTERLINE

CONTROL POINTS

CALC PT'S	Northing	Easting	Description
986	13828479.290	3130883.451	CENTERLINE
987	13828294.930	3131161.897	CENTERLINE
988	1		

MATCHLINE



NOTES:

1. ALL COORDINATES SHOWN HEREON ARE EXPRESSED IN U.S. SURVEY FEET.
2. ALL POINTS SHOWN HEREON ARE REFERENCED TO THE TEXAS COORDINATE SYSTEM, SOUTH CENTRAL ZONE, NORTH AMERICAN DATUM OF 1983, CORRS 96 (EPOCH 2002.00).
3. THE PRIMARY CONTROL POINTS USED FOR THIS PROJECT ARE CITY OF HOUSTON COOPERATIVE CORRS MONUMENTS AS FOLLOWS:
COH2, NGS PID# DF8773 N=13,793,560.96 E=3,108,315.43
COH3, NGS PID# DF8775 N=13,800,460.33 E=3,155,320.54
COH4, NGS PID# DF8777 N=13,851,729.27 E=3,168,870.88
4. ALL MEASUREMENTS MADE WITH CONVENTIONAL SURVEYING EQUIPMENT WERE REDUCED TO GRID EMPLOYING A COMBINED SCALE FACTOR OF 0.999891800.
5. THESE POINTS WERE SET AS ADDITIONAL CONTROL POINTS FOR THIS PROJECT.

LEGEND

*=MONUMENT NOT RECOVERED IN FIELD. POSITION CALCULATED FROM RECOVERED COH REFERENCE POINTS.

I, JACK CHILES, HEREBY CERTIFY THAT THIS DRAWING CORRECTLY REPRESENTS A SURVEY MADE ON THE GROUND BY ME, OR UNDER MY SUPERVISION.

Jack Chiles
JACK CHILES
R.P.L.S. #4778



RODS
Surveying, Inc.

6810 LEE ROAD
SPRING, TEXAS 77379
TEL (281) 257-4020
FAX (281) 257-4021

PRIVATE UTILITY LINES SHOWN
RELIANT ENERGY ENTEX, INC.
SWBT CO. VALID FOR ONE YEAR APPROVED ONLY FOR UNDERGROUND CONDUIT FACILITIES UNLESS NOTED.
RELIANT ENERGY HOUSTON LIGHTING & POWER CO. APPROVED ONLY FOR CROSSING UNDERGROUND DUCTLINES UNLESS NOTED. VALID AT TIME OF REVIEW ONLY.
CABLE COMPANY

RODS SURVEY, INC.
6810 LEE RD.
SPRING, TX 77379
TEL: 281-257-4020

SURVEYED BY: L.A.
FB NO. P-5428

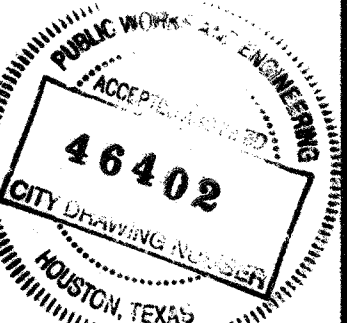
CITY OF HOUSTON
DEPARTMENT OF PUBLIC WORKS AND ENGINEERING

**DOWNTOWN CENTERLINE
REFERENCE ROD SYSTEM
REVITALIZATION**
SHEET NO. 2

GFS NUMBER
N-0645-04-3

DRAWING SCALE
N.T.S.

CITY OF HOUSTON PM
SHEET NO. 3 OF 9



CONTROL POINTS				CONTROL POINTS				CONTROL POINTS				CONTROL POINTS					
ORIG. COH-MON	COH-MON NO.	Northing	Easting	Description	ORIG. COH-MON	COH-MON NO.	Northing	Easting	Description	CALC PT'S	Northing	Easting	Description	CALC PT'S	Northing	Easting	Description
4	5457-7610	13841870.988	3124810.289	COH MGN 4	205	5457-7809	13841007.095	3126552.496	COH MGN 205 8'x8' CONC MKR	901	13844030.215	3121467.573	CENTERLINE	943	13836405.769	3118910.273	CENTERLINE
5	5457-7809	13840796.740	3126473.479	COH MGN 5 3/4" BR	242	5457-7112	13842656.810	3120547.746	COH MGN 242 3/4" BR	902	13843951.173	3121744.754	CENTERLINE	944	13836141.010	3118739.211	CENTERLINE
9		13844023.733	3123337.159	COH MGN 9	247	5357-8610	13841774.400	3120010.105	COH MGN 247 3/4" BR	903	13843672.131	3122021.934	CENTERLINE	945	13835708.462	3118459.738	CENTERLINE
11		13841307.828	3124445.475	COH MGN 11	266	5357-8302	13837037.900	3117346.828	COH MGN 266 5/8" IR	904	13843493.090	3122299.114	CENTERLINE	946	13835010.067	3118008.501	CENTERLINE
12	5457-7708	13840233.460	3126108.874	COH MGN 12 3/4" BR	267	5356-8215	13839907.623	3116617.640	COH MGN 267 5/8" IR	905	13843313.971	3122576.414	CENTERLINE	947	13834321.744	3117563.772	CENTERLINE
13	5457-7807	13839877.930	3126659.708	COH MGN 13 3/4" BR	277	5356-8603	13831497.930	3118893.049	COH MGN 277 3/4" BR	906	13841333.787	3122855.364	CENTERLINE	948	13832935.432	3116568.067	CENTERLINE
15		13842069.236	3121379.460	COH MGN 15	281	5457-8010	13841737.860	3128458.294	COH MGN 281 5/8" IR	907	13842950.615	3123138.938	CENTERLINE	949	13834013.032	3114996.704	CENTERLINE
16		13841890.121	3121556.791	COH MGN 16	298	5457-7603	13837996.620	3124657.518	COH MGN 298 3/4" BR	908	13842767.585	3123422.293	CENTERLINE	950	13833835.991	3115273.884	CENTERLINE
18		13841163.808	3122781.292	COH MGN 18	300	5356-8616	13836374.581	3123072.391	COH MGN 300 3/4" IR	909	13842587.538	3123071.029	CENTERLINE	951	13833656.949	3115551.064	CENTERLINE
19	5457-7409	13840802.984	3123335.696	COH MGN 19 3/4" BR	301	5456-7115	13836016.460	3121056.714	COH MGN 301 3/4" BR	910	13842408.574	3123978.090	CENTERLINE	952	13833477.938	3115828.244	CENTERLINE
20		13840331.780	3122243.570	COH MGN 20	302	5456-7215	13835658.168	3121581.121	COH MGN 302 3/4" BR	911	13842229.358	3124255.539	CENTERLINE	953	13833298.788	3116105.544	CENTERLINE
29	5457-7307	13840007.292	3122819.837	COH MGN 29 3/4" BR	305	5356-8514	13834996.184	3119575.820	COH MGN 305 3/4" BR	912	13842050.492	3124532.448	CENTERLINE	954	13833118.604	3116384.494	CENTERLINE
34	5457-7604	13839541.110	3125015.729	COH MGN 34 3/4" BR	308	5456-7313	13834942.070	3122690.401	COH MGN 308 3/4" BR	913	13841871.447	3124809.633	CENTERLINE	955	13832752.402	3116391.423	CENTERLINE
37	5457-7703	13837824.722	3126124.930	COH MGN 37 1" BR	311	5457-7305	13838783.950	3122815.014	COH MGN 311 3/4" BR	914	13841692.388	3125086.840	CENTERLINE	956	13832572.355	3117230.159	CENTERLINE
38	5457-7802	13837466.590	3126679.327	COH MGN 38 3/4" BR	404		13841130.606	3118827.348	COH MGN 404 3/4" BR	915	13841513.330	3125364.047	CENTERLINE	957	13832392.391	3117507.220	CENTERLINE
39	5457-7902	13837108.430	3127233.634	COH MGN 39 1" BR	409		13841334.159	3125641.427	COH MGN 409 1" BR	916	13841334.159	3125641.427	CENTERLINE	958	13832214.178	3117784.669	CENTERLINE
40		13840405.834	3120304.436	COH MGN 40	422	5356-8411	13833600.460	3118680.415	COH MGN 422 1" BR	917	13841192.989	3125918.007	CENTERLINE	959	13832053.310	3118061.577	CENTERLINE
43	5457-7305	13839139.450	3122261.674	COH MGN 43 3/4" BR	600	5456-7211	13833954.540	3121793.614	COH MGN 600 1" BR	918	13840975.937	3126196.003	CENTERLINE	960	13831856.265	3118338.763	CENTERLINE
45	5457-7503	13837709.371	3124478.449	COH MGN 45 3/4" BR	601	5457-7504	13833806.616	3123924.037	COH MGN 601 3/4" BR	919	13840796.885	3126473.199	CENTERLINE	961	13831677.206	3118615.970	CENTERLINE
46	5457-7602	13837353.980	3125028.696	COH MGN 46 3/4" BR	608	5456-7409	13832013.558	3123735.910	COH MGN 608 1" BR	920	13840617.795	3126750.454	CENTERLINE	962	13831498.147	3118893.176	CENTERLINE
48	5457-7702	13836992.980	3125587.497	COH MGN 48 3/4" BR	614	5356-8408	13832013.530	3118095.295	COH MGN 614 3/4" BR BENT	921	13840441.418	3127023.409	CENTERLINE	963	13831318.977	3119170.556	CENTERLINE
49	5457-7701	13836635.020	3126141.979	COH MGN 49 3/4" BR	634	5457-7408	13840266.980	3123613.108	COH MGN 634 1" BR	922	13843221.006	3123313.639	CENTERLINE	964	13831139.805	3119447.937	CENTERLINE
52		13839397.222	3119588.138	COH MGN 52	715	5357-8611	13842051.782	3120189.415	COH MGN 715 3/4" BR	923	13842662.112	3122932.334	CENTERLINE	965	13830956.775	3119731.292	CENTERLINE
53		13838754.896	3120428.127	COH MGN 53	769	5357-8304	13838152.788	3117720.587	COH MGN 769 1" BR	924	13842386.996	3122774.780	CENTERLINE	966	13831198.702	3119200.237	CENTERLINE
54		13838391.671	3120990.054	COH MGN 54 3/4" BR	816	5356-8515	13835864.204	3119749.677	COH MGN 816 3/4" BR	925	13842103.109	3122591.359	CENTERLINE	967	13830602.612	3120279.584	CENTERLINE
56	5457-7302	13837317.020	3122653.125	COH MGN 56 3/4" BR	817	5357-8601	13835576.767	3120195.227	COH MGN 817 1" BR	926	13841813.836	3122404.458	CENTERLINE	968	13830426.233	3120552.638	CENTERLINE
57	5457-7101A	13836924.903	3120827.849	COH MGN 57 3/4" BR	818	5457-7102	13837103.660	3120550.611	COH MGN 818 3/4" BR	927	13841536.941	3122913.993	CENTERLINE	970	13840152.916	3126897.105	CENTERLINE
67	5456-7216	13836208.215	3121936.718	COH MGN 67 3/4" BR	819	5457-7204	13838212.410	3121267.431	COH MGN 819 3/4" BR	928	13841249.584	3122039.891	CENTERLINE	971	13839987.910	3126659.708	CENTERLINE
68	5456-7415	13835491.685	3123045.344	COH MGN 68 3/4" BR	823	5457-7203	13837854.190	3121821.337	COH MGN 823 3/4" BR	929	13840972.825	3121860.688	CENTERLINE	972	13839593.912	3126475.929	CENTERLINE
69	5456-7414	13835136.220	3123395.617	COH MGN 69 3/4" BR	824	5457-7101B	13837456.630	3121104.802	COH MGN 824 3/4" BR	930	13840972.825	3121860.688	CENTERLINE	973	13839304.639	3126289.028	CENTERLINE
70		13836397.432	3118904.722	COH MGN 70	825	5456-7116	13836195.514	3121074.338	COH MGN 825 3/4" BR	931	13840417.617	3121502.252	CENTERLINE	974	13839017.744	3126103.664	CENTERLINE
72	5356-8615	13835684.590	3120026.753	COH MGN 72 3/4" BR	846	5456-8613	13834808.330	3119853.262	COH MGN 846 3/4" BR	932	13838740.387	3125924.462	CENTERLINE	975	13838740.387	3125924.462	CENTERLINE
73	5457-7115	13835325.239	3120636.428	COH MGN 73 3/4" BR	896				GPS 1 SET BRASS DISK	933	13839853.187	3121141.132	CENTERLINE	976	13837353.980	3125028.636	CENTERLINE
74	5456-7114	13834968.609	3121135.433	COH MGN 74 3/4" BR	897	SEE NOTE 5 FOR MONUMENTS 891-896			GPS 2 SET BRASS DISK	934	13839586.068	3120965.084	CENTERLINE	977	13837076.872	3124849.655	CENTERLINE
75	5356-8611	13833572.605	3121023.635	COH MGN 75 3/4" BR	898	5457-7114	13843542.430	3121037.020	GPS 3 SET BRASS DISK	935	13839308.949	3120786.035	CENTERLINE	978	13837908.420	3125386.923	CENTERLINE
82	5356-8603	13839040.128	3119638.397	COH MGN 82 3/4" BR	899	5357-8405	13838667.360	3118056.630	GPS 4 SET BRASS DISK	936	13839031.831	3120606.987	CENTERLINE	979	13837631.175	3125207.794	CENTERLINE
87		13840609.123	3124462.885	COH MGN 87 3/4" BR	899	5357-8011	13838773.030	3114913.400	GPS 5 SET BRASS DISK	937	13839354.711	3120457.939	CENTERLINE	980	13837353.980	3125028.636	CENTERLINE
89		13836566.568	3121382.120	COH MGN 89 3/4" BR	899	5457-7715	13844548.560	3125669.910	GPS 6 SET BRASS DISK	938	13838477.458	3120244.904	CENTERLINE	981	13836799.753	3124670.607	CENTERLINE
89					899	5456-7414	13838322.780	3123384.830	GPS 7 SET BRASS DISK	939	13838200.206	3120069.670	CENTERLINE	982	13836799.753	3124670.607	CENTERLINE
197	5457-7201	13836566.568	3121382.120	COH MGN 197 3/4" BR	896	5356-8605	13830294.490	3120112.920	GPS 8 SET BRASS DISK	940	13837645.702	3119711.401	CENTERLINE	983	13836566.568	3124491.534	CENTERLINE
										941	13837095.661	3119356.017	CENTERLINE	984	138362		

CENTERLINE / BASELINE INFORMATION

CONTROL POINT LIST W/STREET NAMES NORTH AND SOUTH

BAGBY STREET

Table with columns: Pt#, Station, Offset, Description, Northing, Easting. Data for Bagby Street control points.

BRAZOS STREET

Table with columns: Pt#, Station, Offset, Description, Northing, Easting. Data for Brazos Street control points.

LOUISIANA STREET

Table with columns: Pt#, Station, Offset, Description, Northing, Easting. Data for Louisiana Street control points.

MILAM STREET

Table with columns: Pt#, Station, Offset, Description, Northing, Easting. Data for Milam Street control points.

MAIN STREET

Table with columns: Pt#, Station, Offset, Description, Northing, Easting. Data for Main Street control points.

SAN JACINTO STREET

Table with columns: Pt#, Station, Offset, Description, Northing, Easting. Data for San Jacinto Street control points.

CAROLINE STREET

Table with columns: Pt#, Station, Offset, Description, Northing, Easting. Data for Caroline Street control points.

AUSTIN STREET

Table with columns: Pt#, Station, Offset, Description, Northing, Easting. Data for Austin Street control points.

LA BRANCH STREET

Table with columns: Pt#, Station, Offset, Description, Northing, Easting. Data for La Branch Street control points.

CRAWFORD STREET

Table with columns: Pt#, Station, Offset, Description, Northing, Easting. Data for Crawford Street control points.

CONTROL POINT LIST W/STREET NAMES NORTH AND SOUTH

CHENEVERT STREET

Table with columns: Pt#, Station, Offset, Description, Northing, Easting. Data for Chenevert Street control points.

HUTCHINS STREET

Table with columns: Pt#, Station, Offset, Description, Northing, Easting. Data for Hutchins Street control points.

DOWLING STREET

Table with columns: Pt#, Station, Offset, Description, Northing, Easting. Data for Dowling Street control points.

CONTROL POINT LIST W/STREET NAMES PARALLEL TO MCKINNEY AVE.

FRANKLIN AVENUE

Table with columns: Pt#, Station, Offset, Description, Northing, Easting. Data for Franklin Avenue control points.

PRESTON AVENUE

Table with columns: Pt#, Station, Offset, Description, Northing, Easting. Data for Preston Avenue control points.

CAPITOL AVENUE

Table with columns: Pt#, Station, Offset, Description, Northing, Easting. Data for Capitol Avenue control points.

WALKER AVENUE

Table with columns: Pt#, Station, Offset, Description, Northing, Easting. Data for Walker Avenue control points.

CONTROL POINT LIST W/STREET NAMES PARALLEL TO MCKINNEY AVE.

Mc KINNEY AVENUE

Table with columns: Pt#, Station, Offset, Description, Northing, Easting. Data for McKinney Avenue control points.

DALLAS AVENUE

Table with columns: Pt#, Station, Offset, Description, Northing, Easting. Data for Dallas Avenue control points.

POLK AVENUE

Table with columns: Pt#, Station, Offset, Description, Northing, Easting. Data for Polk Avenue control points.

PEASE AVENUE

Table with columns: Pt#, Station, Offset, Description, Northing, Easting. Data for Pease Avenue control points.

GRAY AVENUE

Table with columns: Pt#, Station, Offset, Description, Northing, Easting. Data for Gray Avenue control points.

HADLEY AVENUE

Table with columns: Pt#, Station, Offset, Description, Northing, Easting. Data for Hadley Avenue control points.

Mc GOWEN AVENUE

Table with columns: Pt#, Station, Offset, Description, Northing, Easting. Data for McGowen Avenue control points.

DENNIS AVENUE

Table with columns: Pt#, Station, Offset, Description, Northing, Easting. Data for Dennis Avenue control points.

TUAM AVENUE

Table with columns: Pt#, Station, Offset, Description, Northing, Easting. Data for Tuam Avenue control points.

ELGIN AVENUE

Table with columns: Pt#, Station, Offset, Description, Northing, Easting. Data for Elgin Avenue control points.

CONTROL POINT LIST W/STREET NAMES PARALLEL TO MCKINNEY AVE.

HOLMAN AVENUE

Table with columns: Pt#, Station, Offset, Description, Northing, Easting. Data for Holman Avenue control points.

CLEBURNE AVENUE

Table with columns: Pt#, Station, Offset, Description, Northing, Easting. Data for Cleburne Avenue control points.

ANN AVENUE & ST CHARLES ST

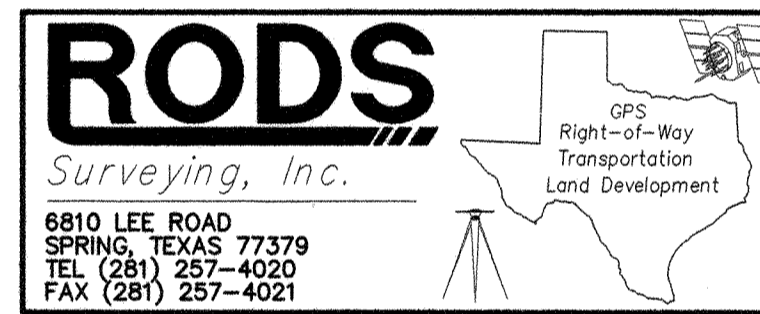
Table with columns: Pt#, Station, Offset, Description, Northing, Easting. Data for Ann Avenue & St Charles St control points.

NOTES:

- 1. ALL COORDINATES SHOWN HEREON ARE EXPRESSED IN U.S. SURVEY FEET.
2. ALL POINTS SHOWN HEREON ARE REFERENCED TO THE TEXAS COORDINATE SYSTEM, SOUTH CENTRAL ZONE, NORTH AMERICAN DATUM OF 1983, CORRS 98 (EPOCH 2002.00).
3. THE PRIMARY CONTROL POINTS USED FOR THIS PROJECT ARE CITY OF HOUSTON COOPERATIVE CORRS MONUMENTS AS FOLLOWS:
4. ALL MEASUREMENTS MADE WITH CONVENTIONAL SURVEYING EQUIPMENT WERE REDUCED TO GRID EMPLOYING A COMBINED SCALE FACTOR OF 0.999981800.

LEGEND

- *MONUMENT NOT RECOVERED IN FIELD. POSITION CALCULATED FROM RECOVERED COH REFERENCE POINTS.



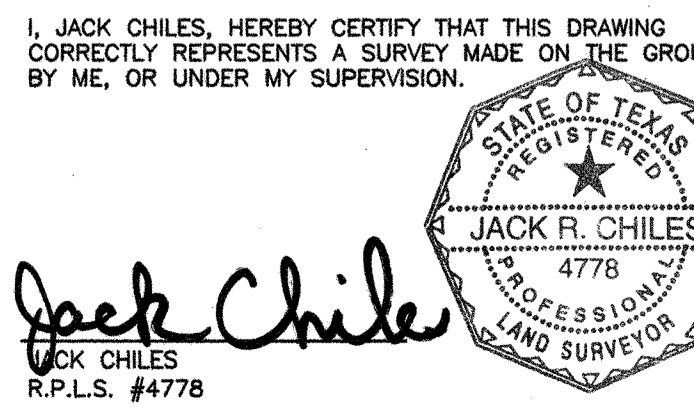
PRIVATE UTILITY LINES SHOWN
RELIANT ENERGY ENTEX, INC.
SWBT CO. VALID FOR ONE YEAR
APPROVED ONLY FOR UNDERGROUND CONDUIT FACILITIES UNLESS NOTED.
RELIANT ENERGY HOUSTON LIGHTING & POWER CO.
APPROVED ONLY FOR CROSSING UNDERGROUND DUCTULENS UNLESS NOTED. VALID AT TIME OF REVIEW ONLY.

CABLE COMPANY
RODS SURVEY, INC.
6810 LEE RD.
SPRING, TX 77379
TEL: 281-257-4020

CITY OF HOUSTON
DEPARTMENT OF PUBLIC WORKS AND ENGINEERING

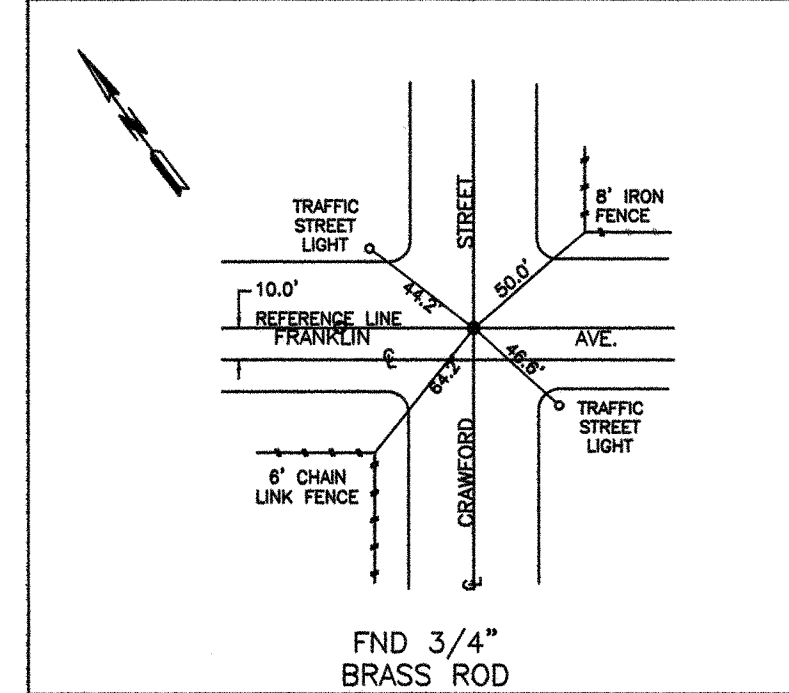
DOWNTOWN CENTERLINE REFERENCE ROD SYSTEM REVITALIZATION

Table with columns: SHEET NO., GFS NUMBER, N-0645-04-3, DRAWING SCALE, N.T.S., CITY OF HOUSTON PM, SHEET NO. 4 OF 9.



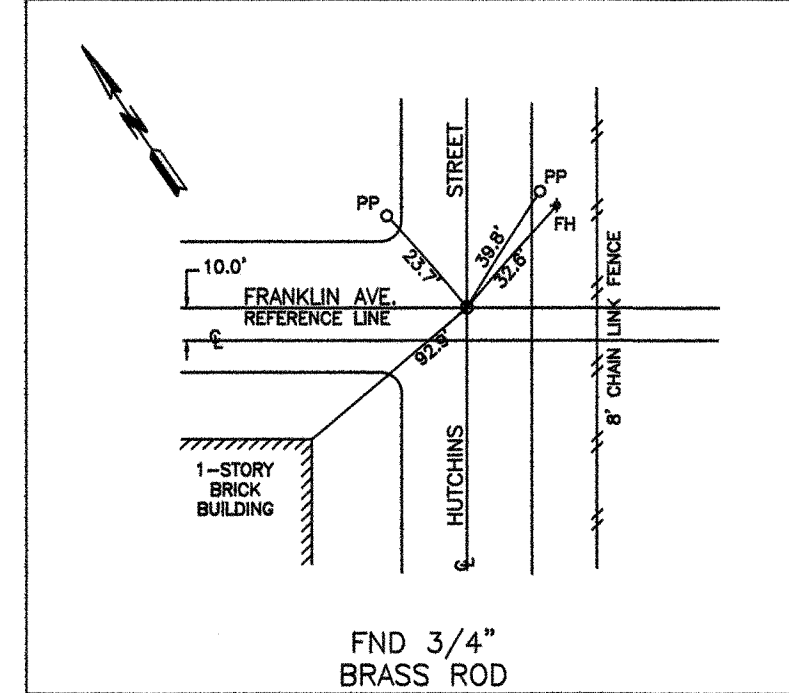
JACK CHILES
R.P.L.S. #4778

COH MON 4 CRAWFORD STREET =STA. 3+31.95
5457-7610 FRANKLIN AVENUE =STA. 39+79.45



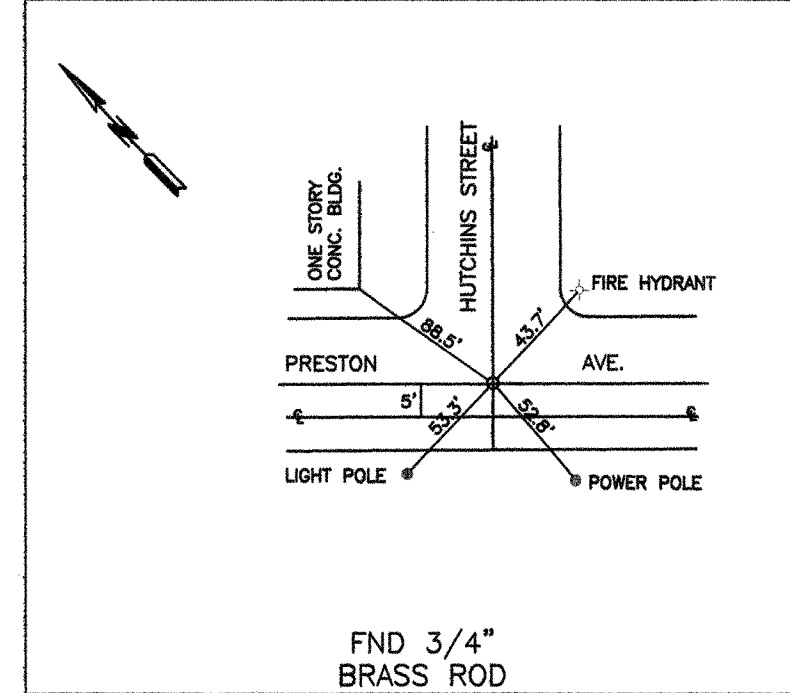
FND 3/4" BRASS ROD

COH MON 5 HUTCHINS STREET =STA. 3+21.89
5457-7609 FRANKLIN AVENUE =STA. 59+59.40



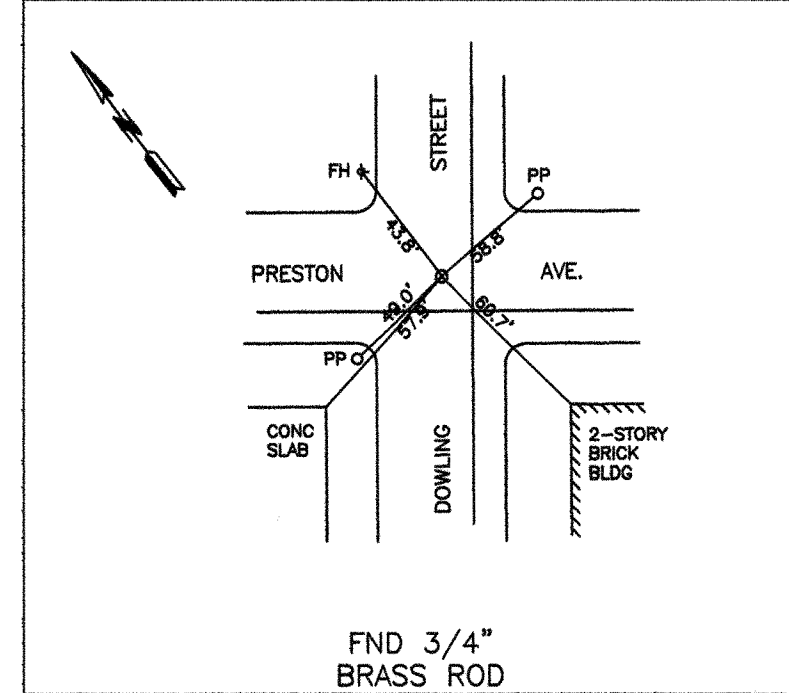
FND 3/4" BRASS ROD

COH MON 12 HUTCHINS STREET =STA. 9+92.87
5457-7708 PRESTON AVENUE =STA. 59+58.84



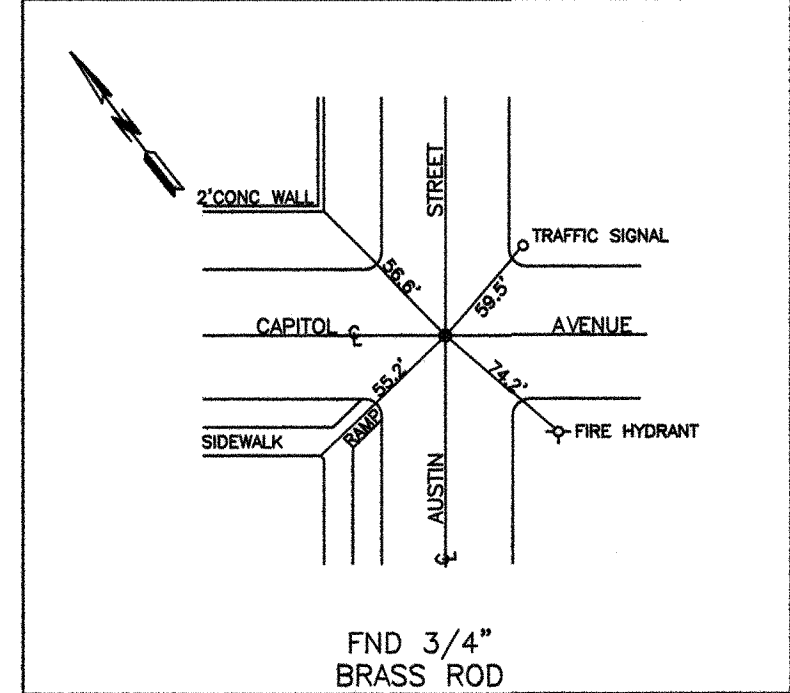
FND 3/4" BRASS ROD

COH MON 13 DOWLING STREET =STA. 9+92.64
5457-7807 PRESTON AVENUE =STA. 86+14.45



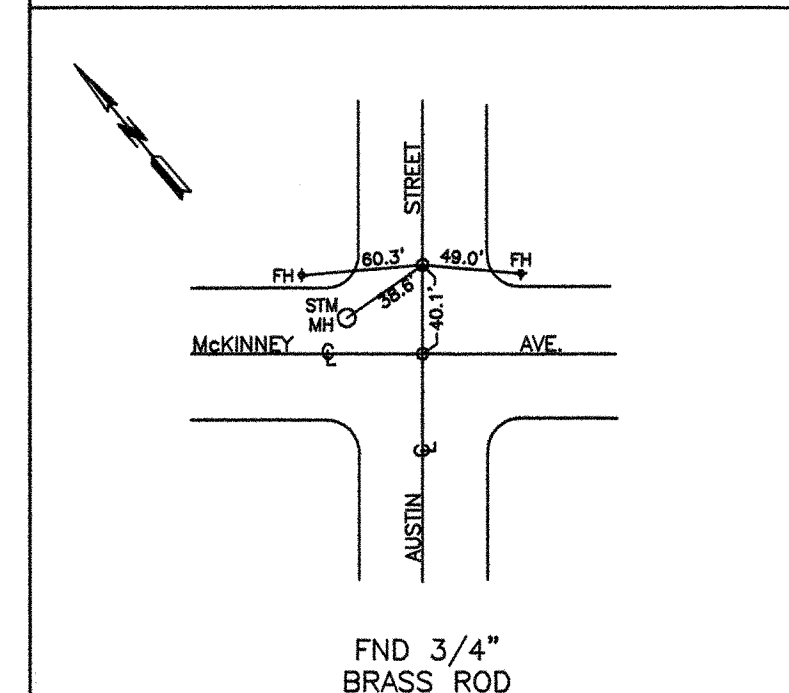
FND 3/4" BRASS ROD

COH MON 19 AUSTIN STREET =STA. 20+19.17
5457-7409 CAPITOL AVENUE =STA. 33+20.48



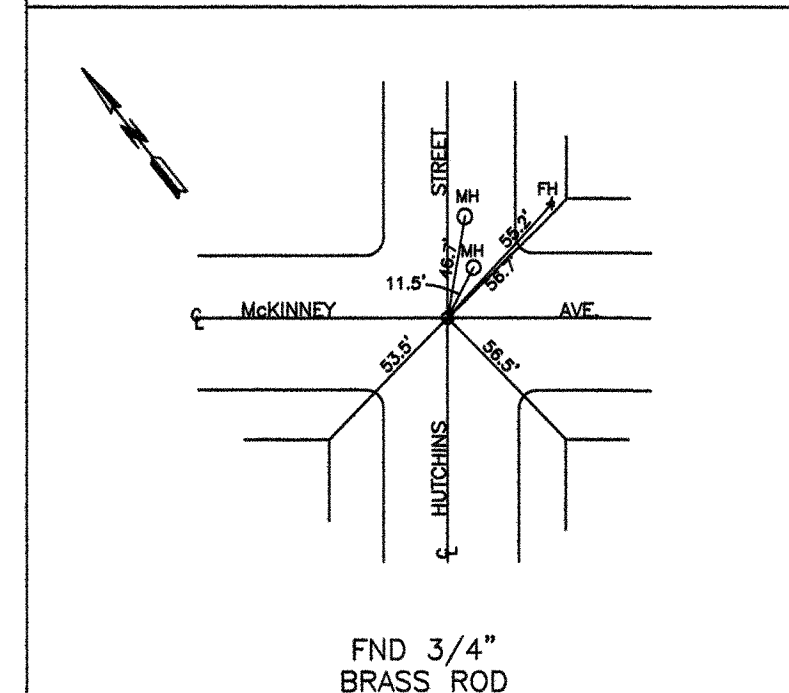
FND 3/4" BRASS ROD

COH MON 30 AUSTIN STREET =STA. 29+67.45
5457-7307 Mc KINNEY AVENUE =STA. 33+19.00



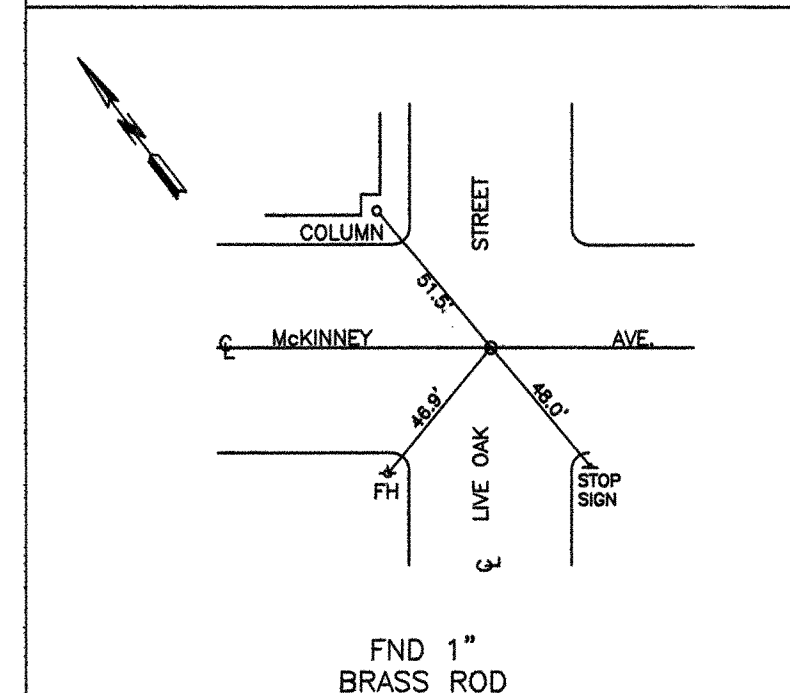
FND 3/4" BRASS ROD

COH MON 34 HUTCHINS STREET =STA. 30+07.57
5457-7604 Mc KINNEY AVENUE =STA. 59+59.08



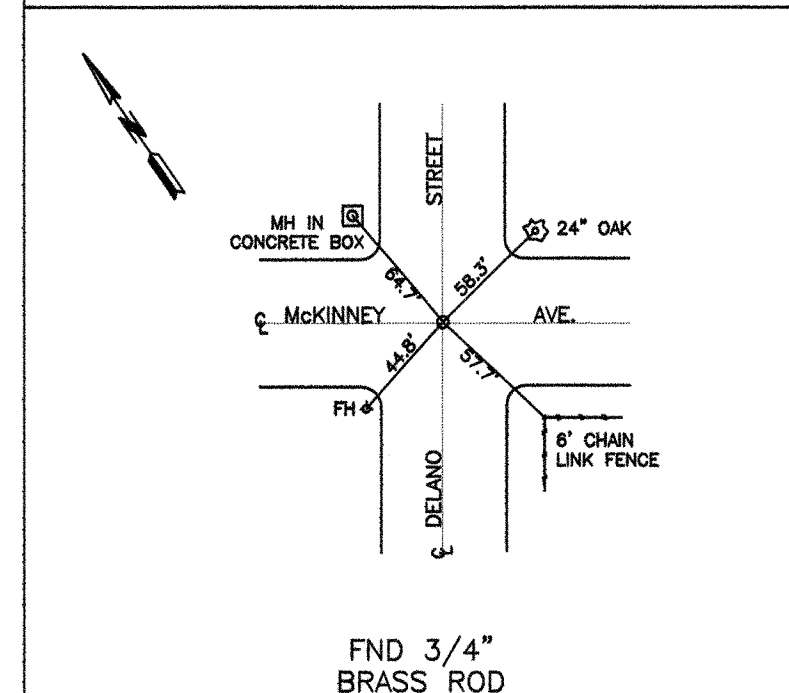
FND 3/4" BRASS ROD

COH MON 37 HUTCHINS STREET =STA. 72+79.51
5457-7703 Mc KINNEY AVENUE =STA. 72+79.51



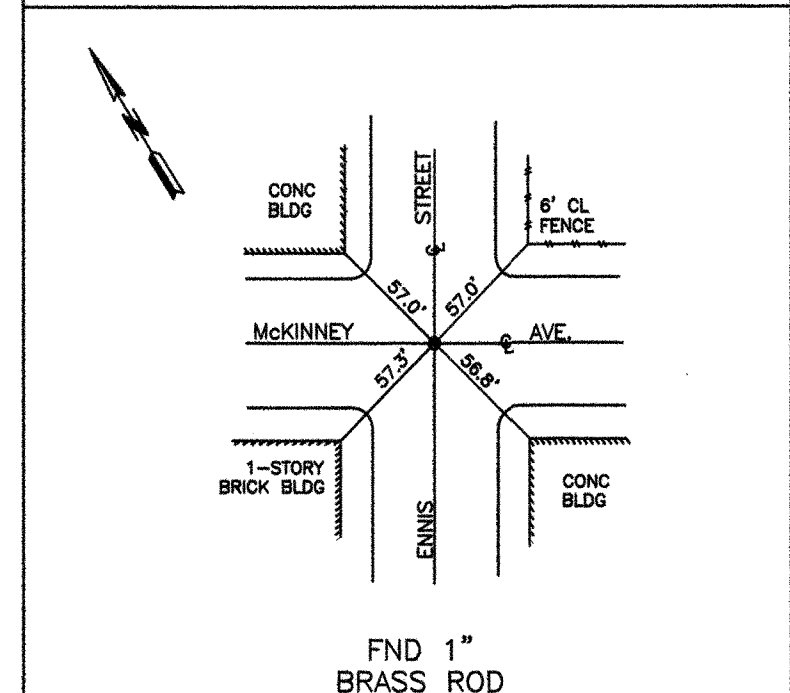
FND 1" BRASS ROD

COH MON 38 HUTCHINS STREET =STA. 79+39.52
5457-7802 Mc KINNEY AVENUE =STA. 79+39.52



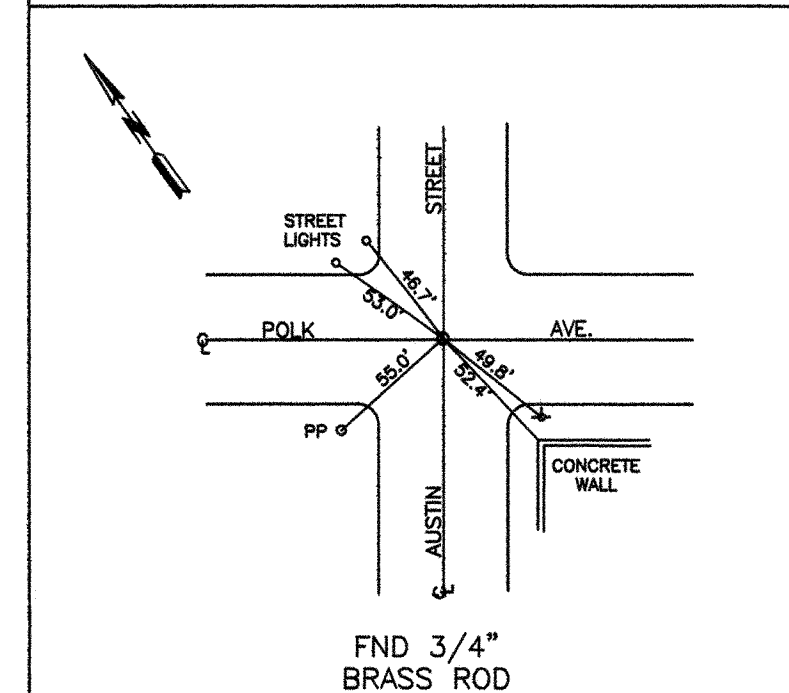
FND 3/4" BRASS ROD

COH MON 39 HUTCHINS STREET =STA. 85+99.47
5457-7902 Mc KINNEY AVENUE =STA. 85+99.47



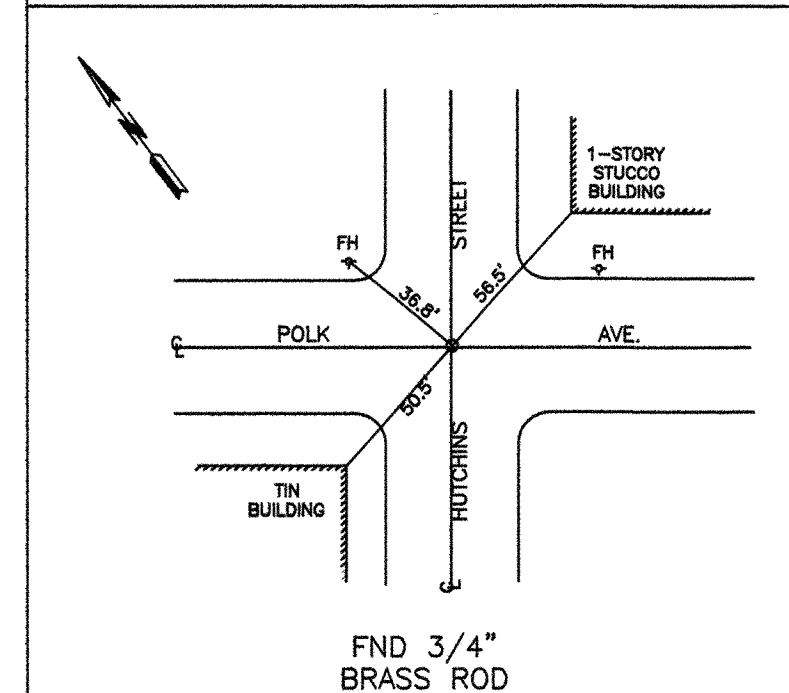
FND 1" BRASS ROD

COH MON 43 AUSTIN STREET =STA. 39+99.29
5457-7305 POLK AVENUE =STA. 33+21.15



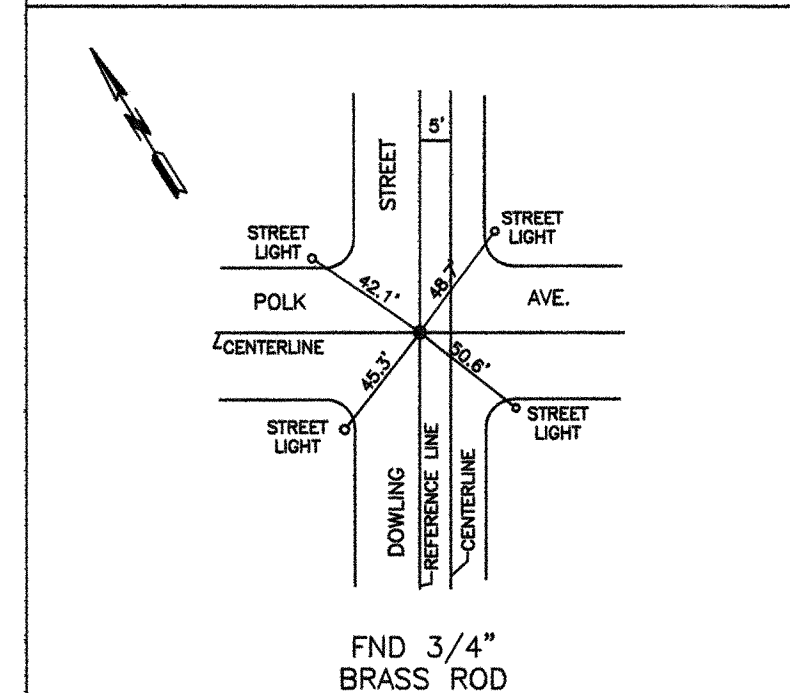
FND 3/4" BRASS ROD

COH MON 45 HUTCHINS STREET =STA. 39+97.75
5457-7503 POLK AVENUE =STA. 59+59.18



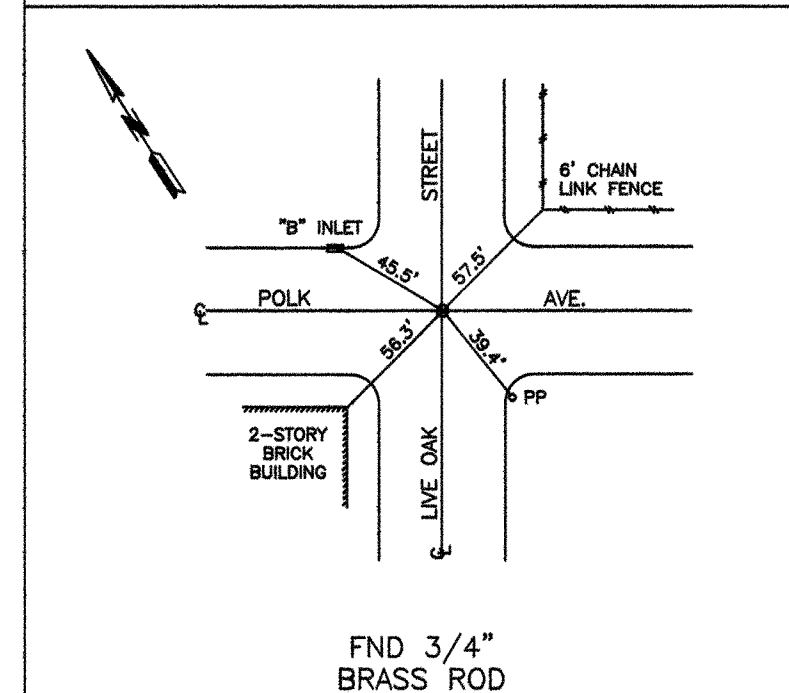
FND 3/4" BRASS ROD

COH MON 46 DOWLING STREET =STA. 39+97.73
5457-7602 POLK AVENUE =STA. 66+14.22



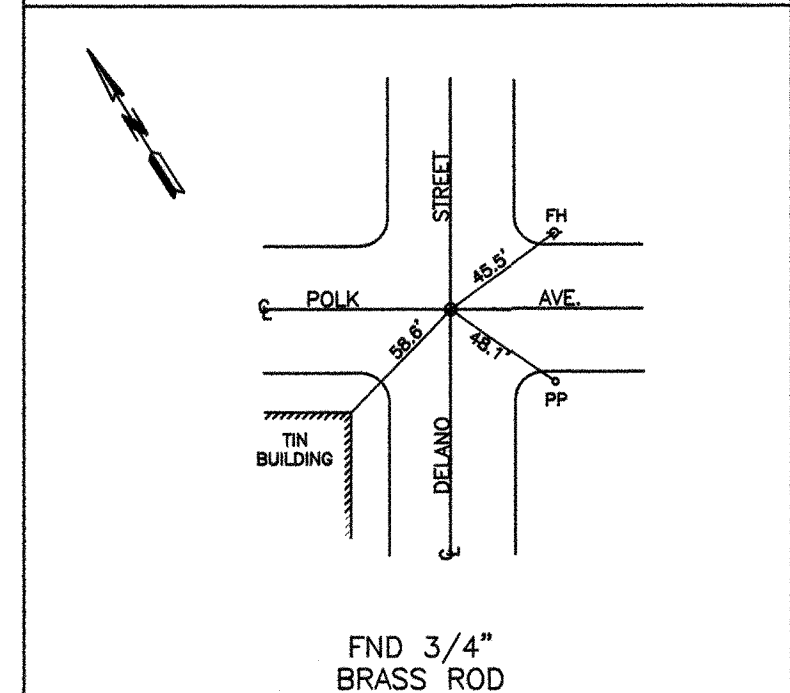
FND 3/4" BRASS ROD

COH MON 48 POLK AVENUE =STA. 72+79.48
5457-7702 POLK AVENUE =STA. 72+79.48



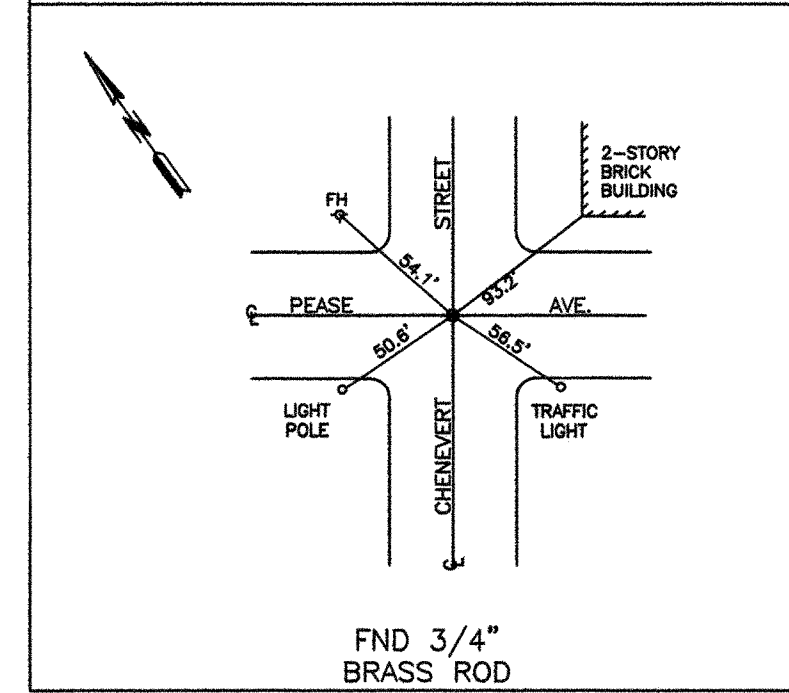
FND 3/4" BRASS ROD

COH MON 49 POLK AVENUE =STA. 79+39.47
5457-7701 POLK AVENUE =STA. 79+39.47



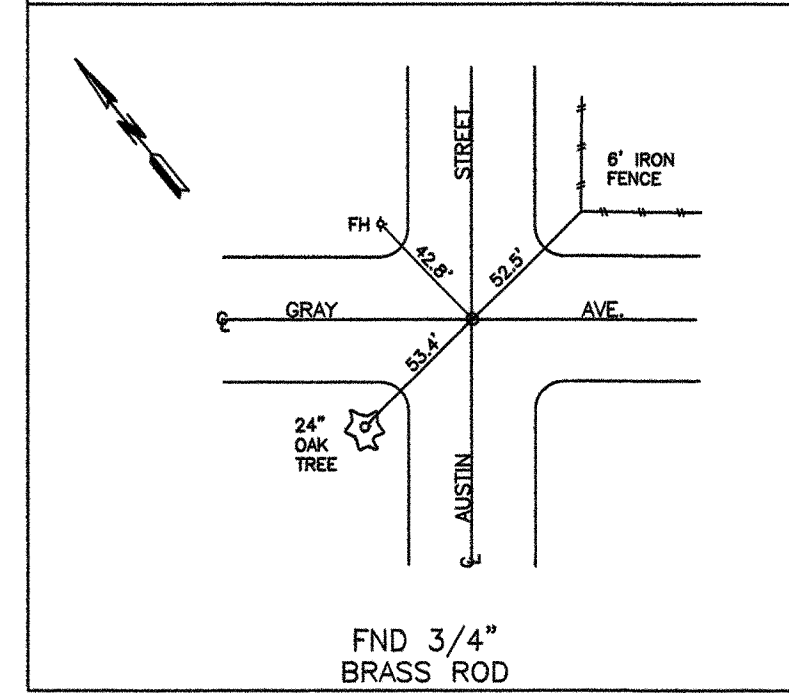
FND 3/4" BRASS ROD

COH MON 56 CHENEVERT STREET =STA. 53+17.73
5457-7302 PEASE AVENUE =STA. 46+38.95



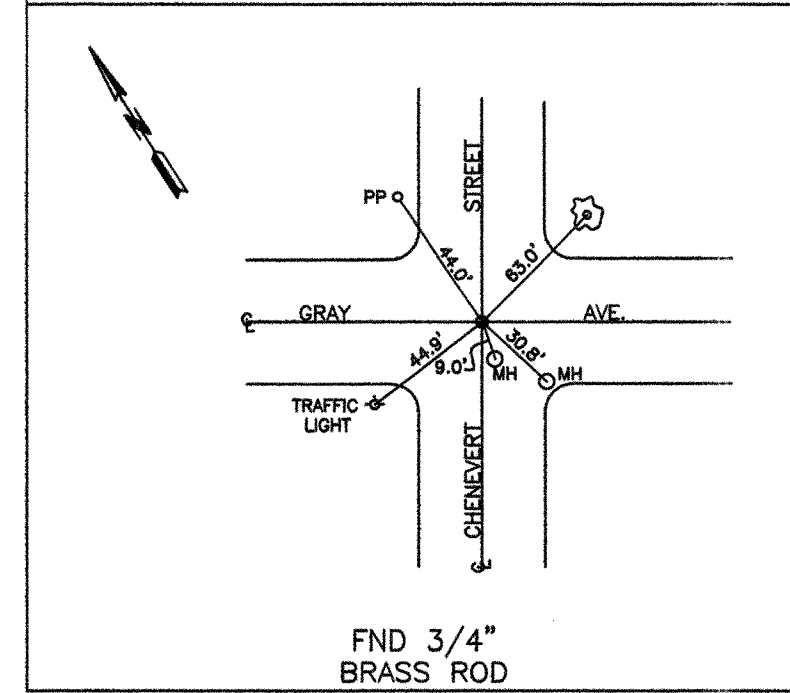
FND 3/4" BRASS ROD

COH MON 66 AUSTIN STREET =STA. 66+37.48
5457-7101A GRAY AVENUE =STA. 33+18.63



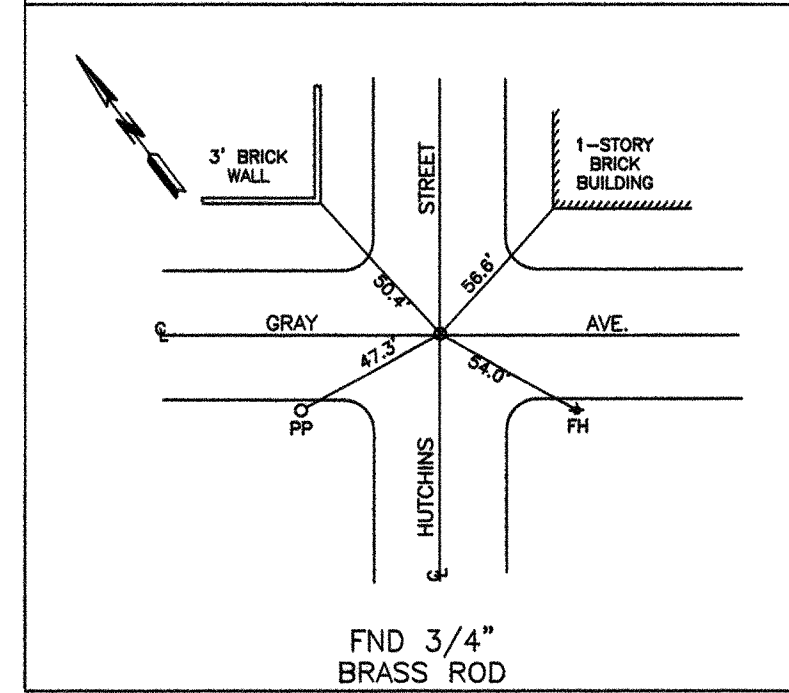
FND 3/4" BRASS ROD

COH MON 67 CHENEVERT STREET =STA. 66+37.84
5456-7216 GRAY AVENUE =STA. 46+38.94



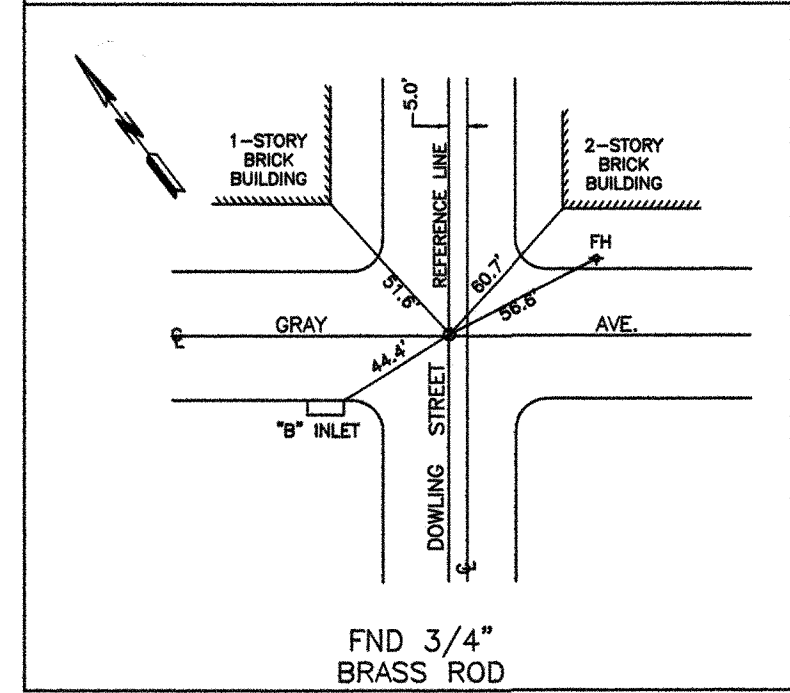
FND 3/4" BRASS ROD

COH MON 68 HUTCHINS STREET =STA. 66+38.19
5456-7415 GRAY AVENUE =STA. 59+58.97



FND 3/4" BRASS ROD

COH MON 69 HUTCHINS STREET =STA. 66+14.07
5456-7414 GRAY AVENUE =STA. 66+14.07



FND 3/4" BRASS ROD

NOTES:

1. ALL COORDINATES SHOWN HEREON ARE EXPRESSED IN U.S. SURVEY FEET.
2. ALL POINTS SHOWN HEREON ARE REFERENCED TO THE TEXAS COORDINATE SYSTEM, SOUTH CENTRAL ZONE, NORTH AMERICAN DATUM OF 1983, CORRS 96 (EPOCH 2002.00).
3. THE PRIMARY CONTROL POINTS USED FOR THIS PROJECT ARE CITY OF HOUSTON COOPERATIVE CORRS MONUMENTS AS FOLLOWS:
COH2, NGS PID# DF8773 N=13,793,560.96 E=3,108,315.43
COH3, NGS PID# DF8775 N=13,800,460.33 E=3,155,320.54
COH4, NGS PID# DF8777 N=13,851,729.27 E=3,168,870.88
4. ALL MEASUREMENTS MADE WITH CONVENTIONAL SURVEYING EQUIPMENT WERE REDUCED TO GRID EMPLOYING A COMBINED SCALE FACTOR OF 0.999891800.

LEGEND

*=MONUMENT NOT RECOVERED IN FIELD. POSITION CALCULATED FROM RECOVERED COH REFERENCE POINTS.

RODS
Surveying, Inc.
8810 LEE ROAD
SPRING, TEXAS 77379
TEL (281) 257-4020
FAX (281) 257-4021

PRIVATE UTILITY LINES SHOWN

RELIANT ENERGY ENTECH, INC.

SWBT CO. VALID FOR ONE YEAR
APPROVED ONLY FOR UNDERGROUND CONDUIT FACILITIES
UNLESS NOTED.

RELIANT ENERGY
HOUSTON LIGHTING & POWER CO.
APPROVED ONLY FOR CROSSING UNDERGROUND DUCTLINES
UNLESS NOTED. VALID AT TIME OF REVIEW ONLY.

CABLE COMPANY

RODS SURVEY, INC.
6810 LEE RD.
SPRING, TX 77379
TEL: 281-257-4020

SURVEYED BY: L.A.
FB NO. P-5428

CITY OF HOUSTON
DEPARTMENT OF PUBLIC WORKS AND ENGINEERING

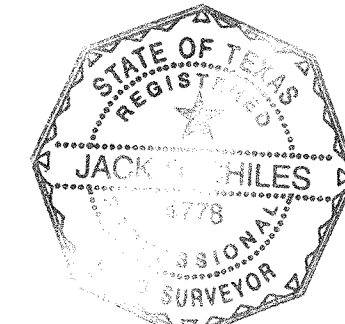
DOWNTOWN CENTERLINE
REFERENCE ROD SYSTEM
REVITALIZATION

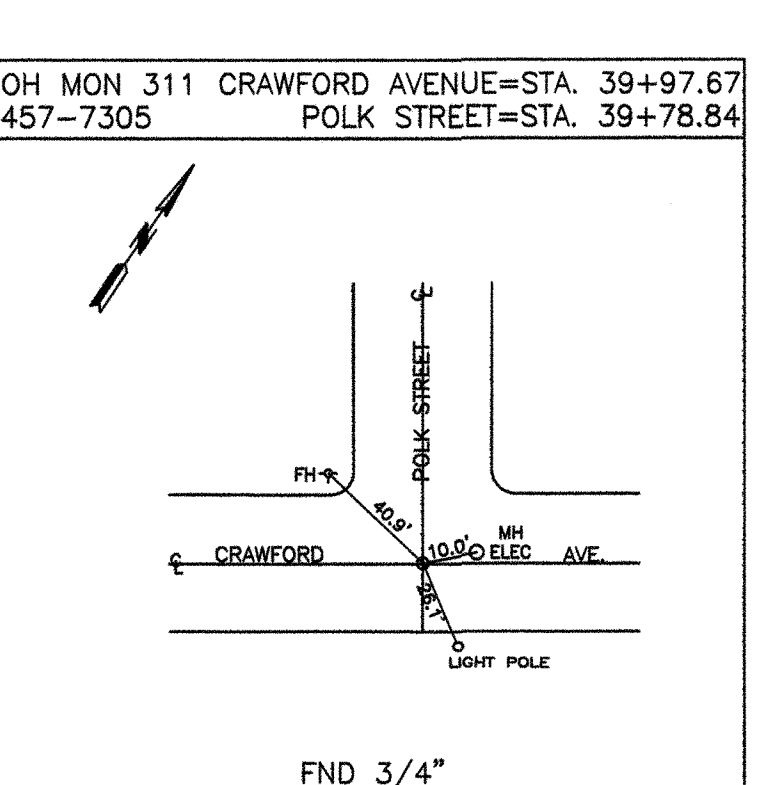
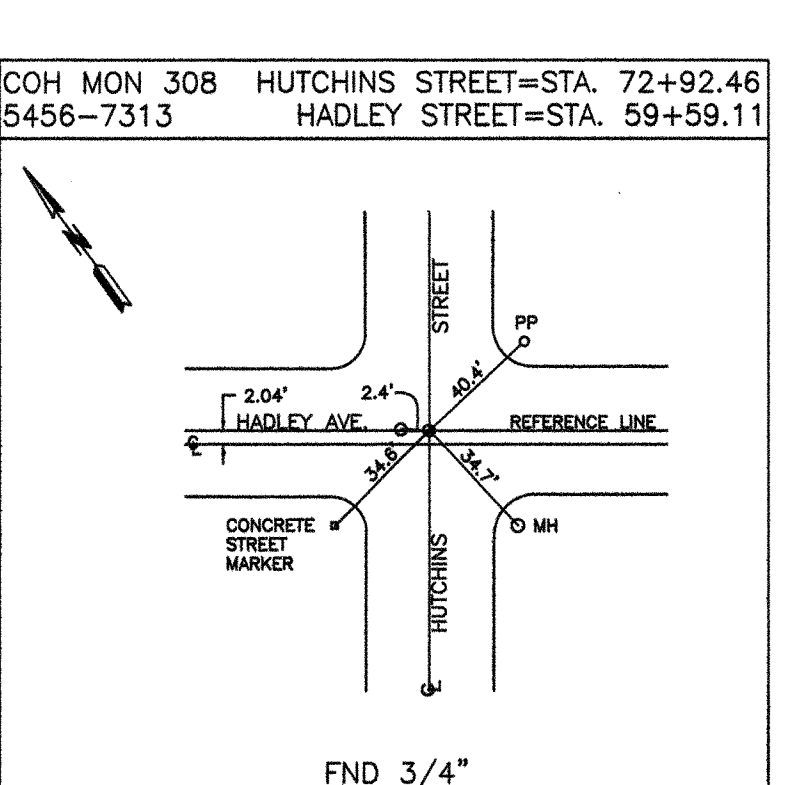
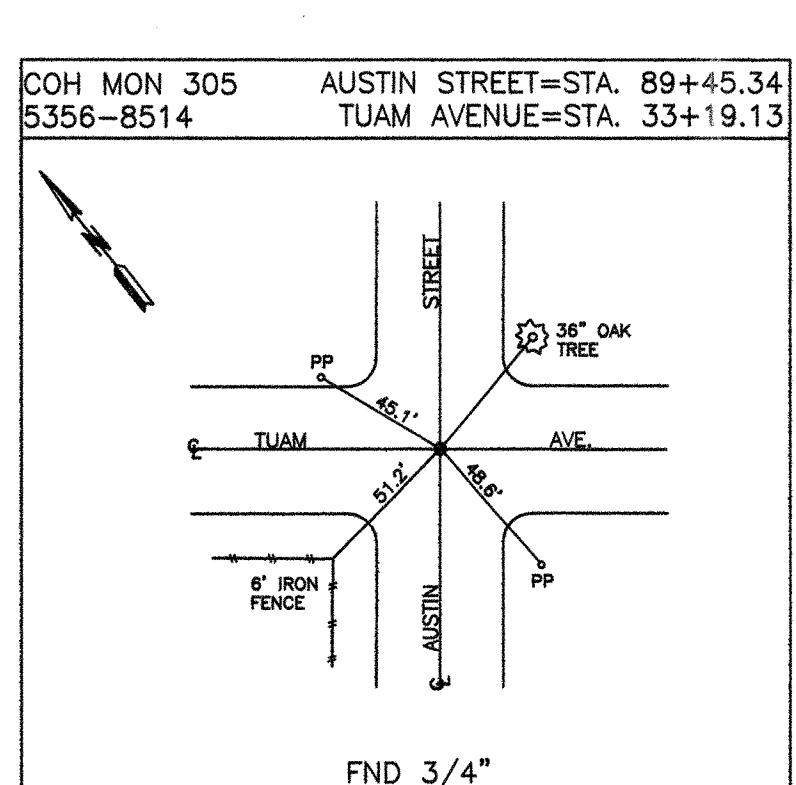
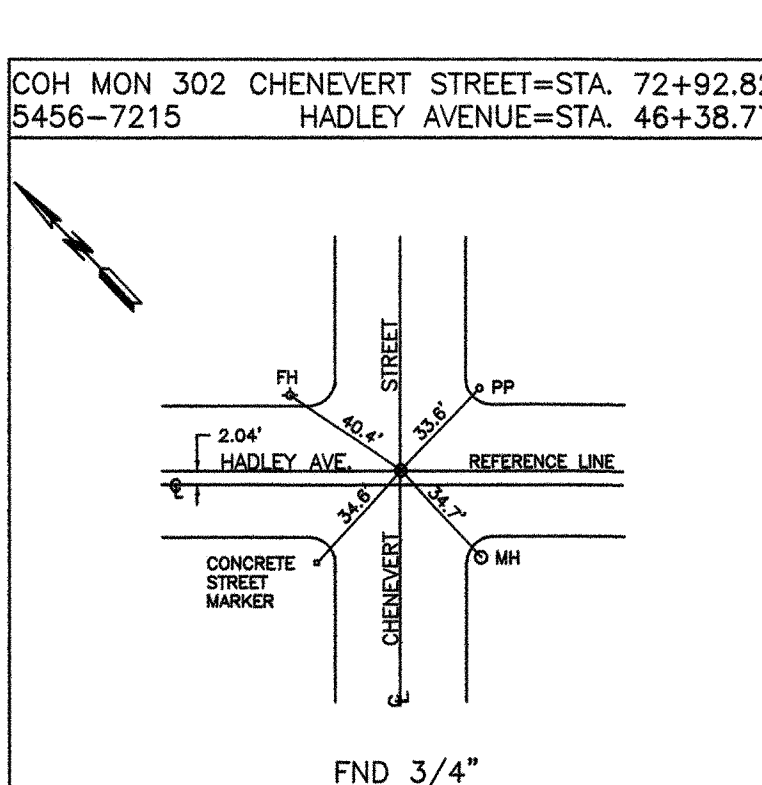
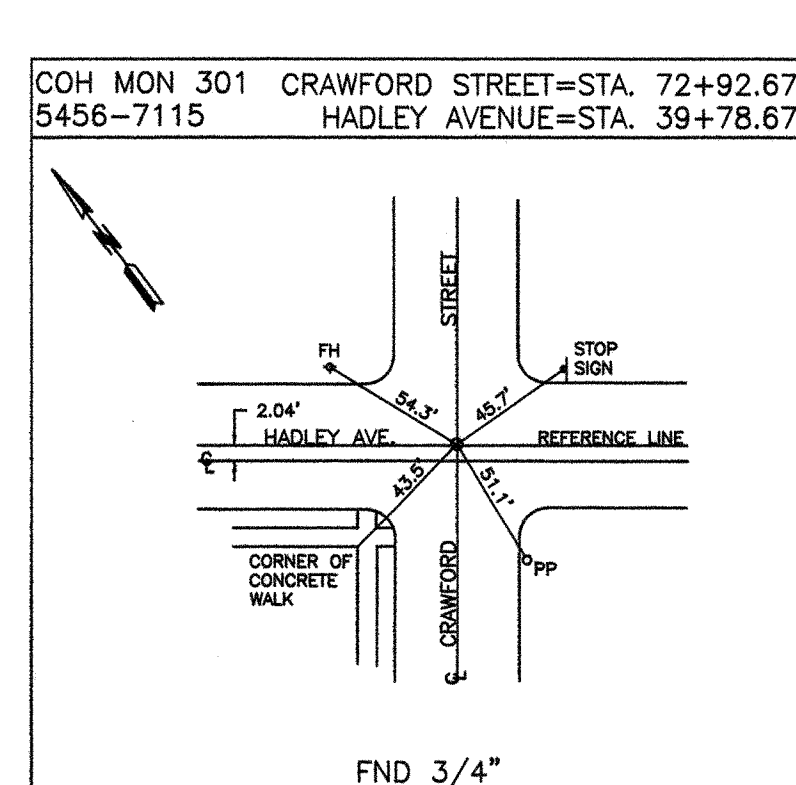
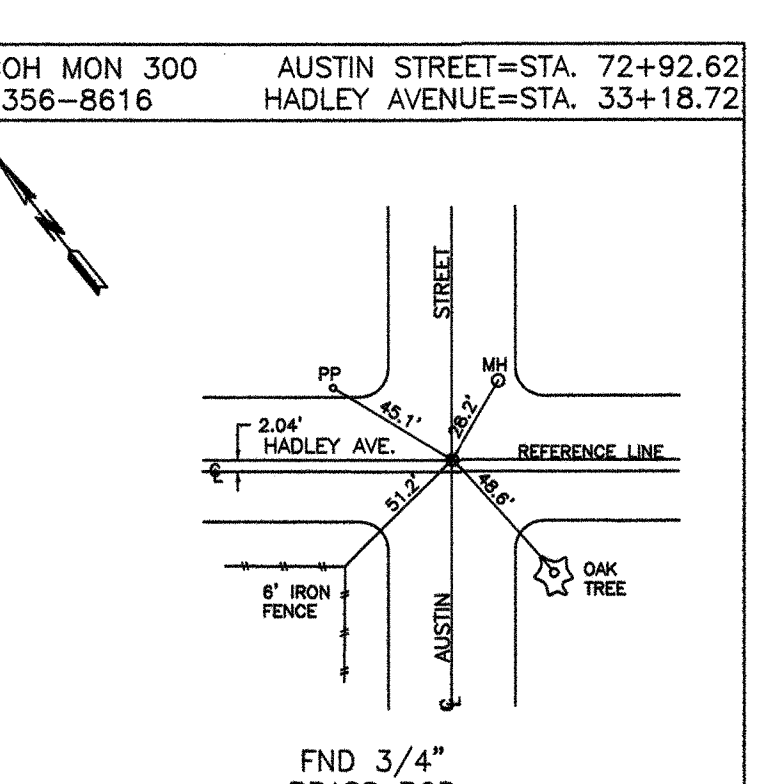
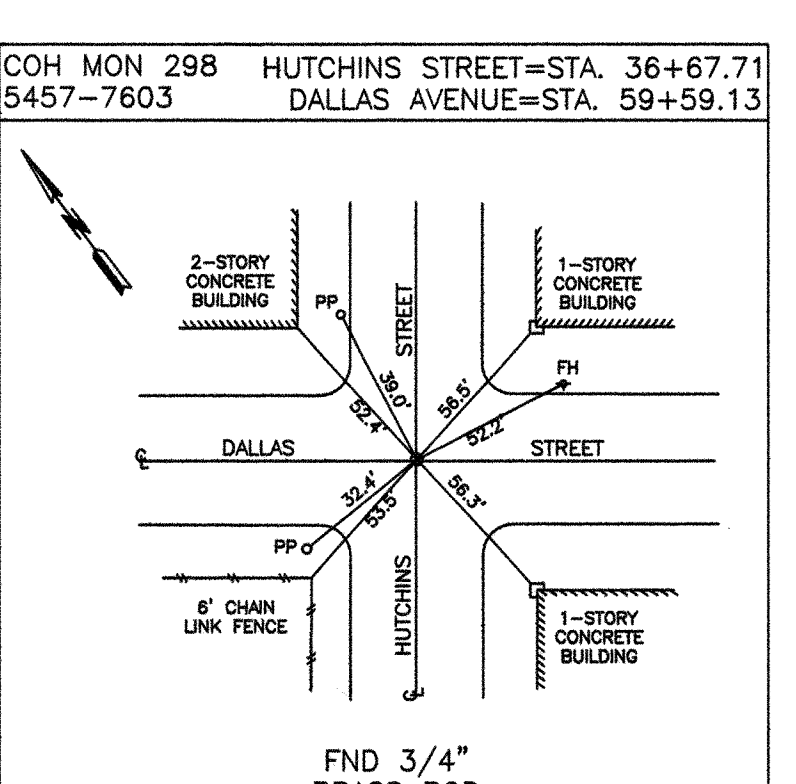
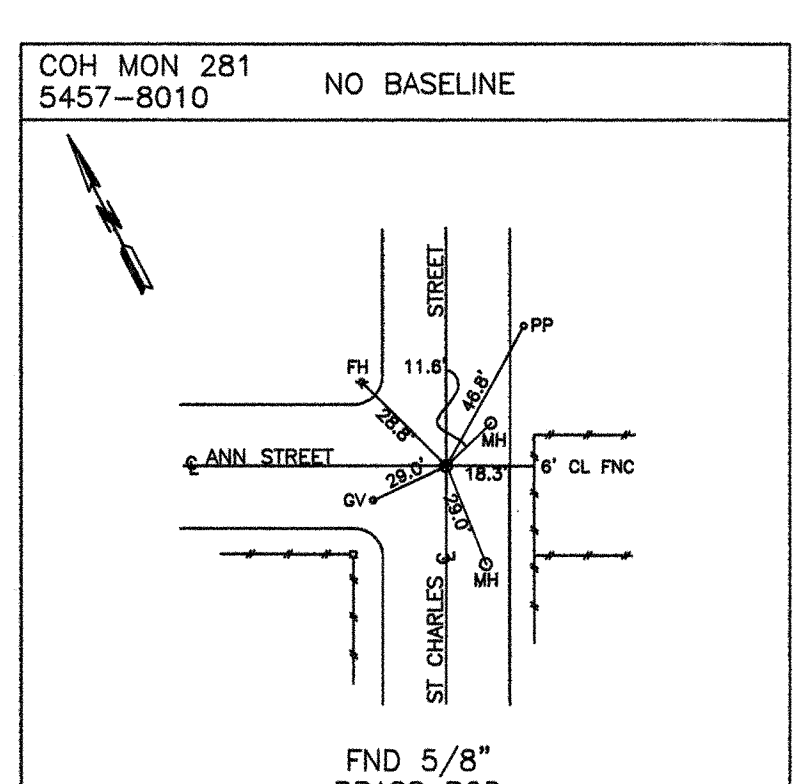
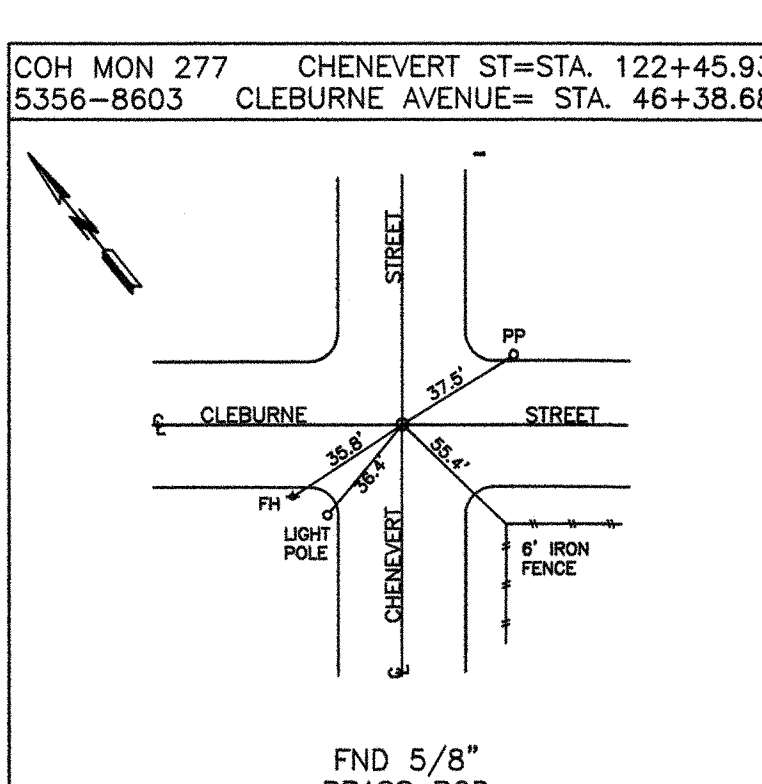
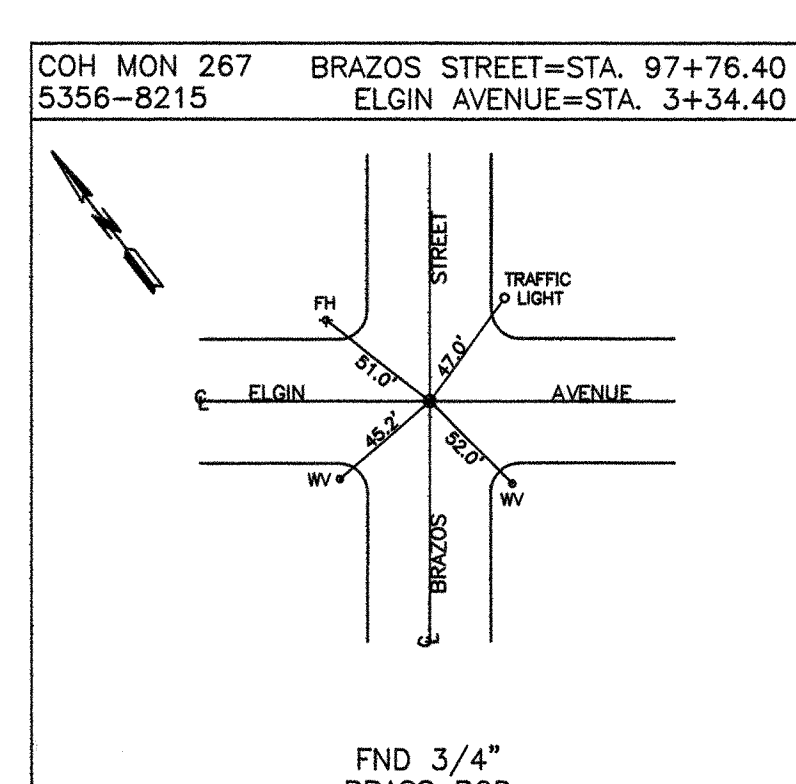
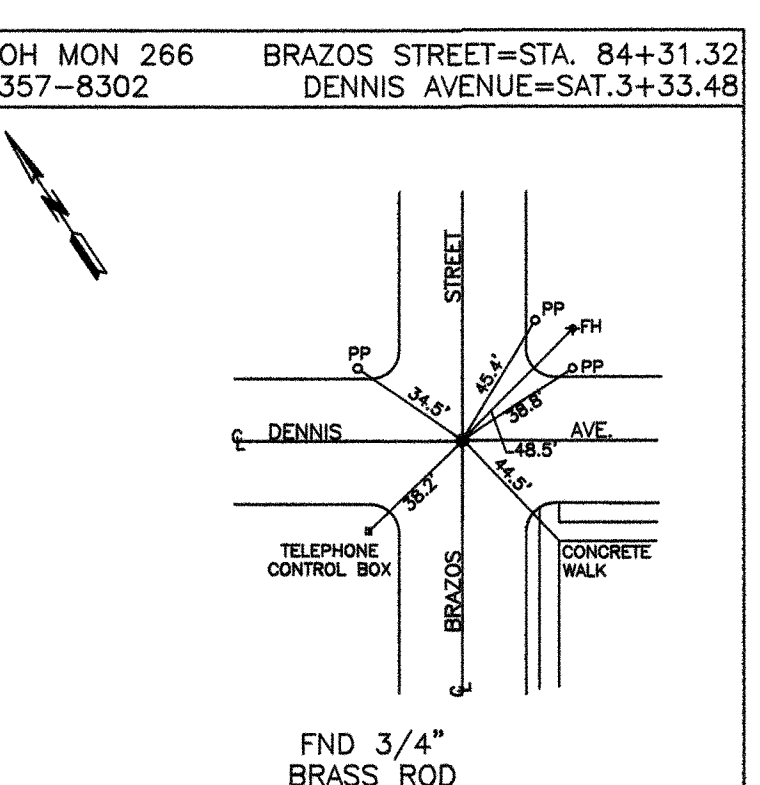
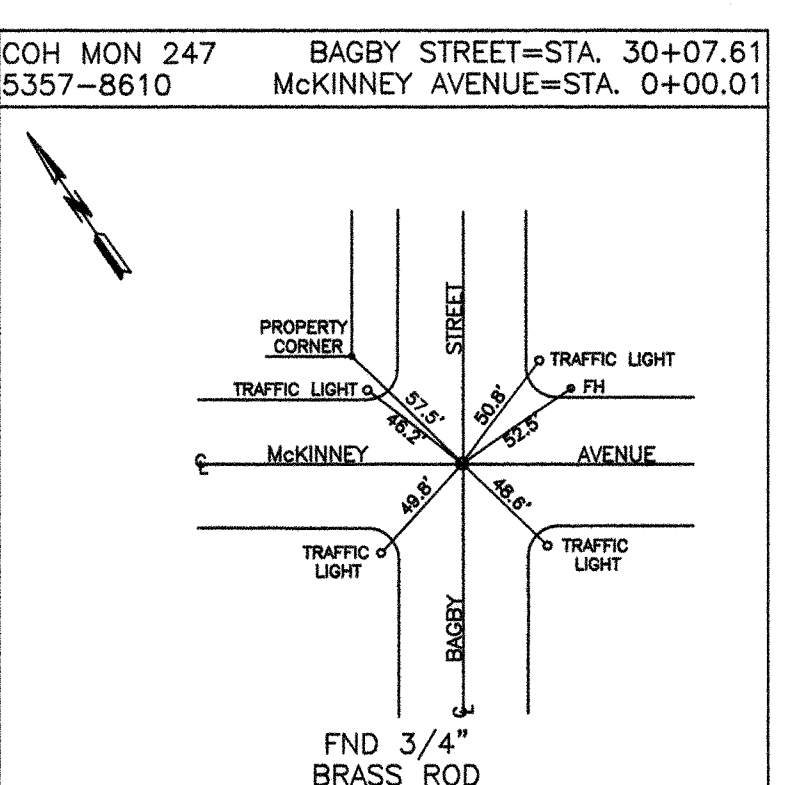
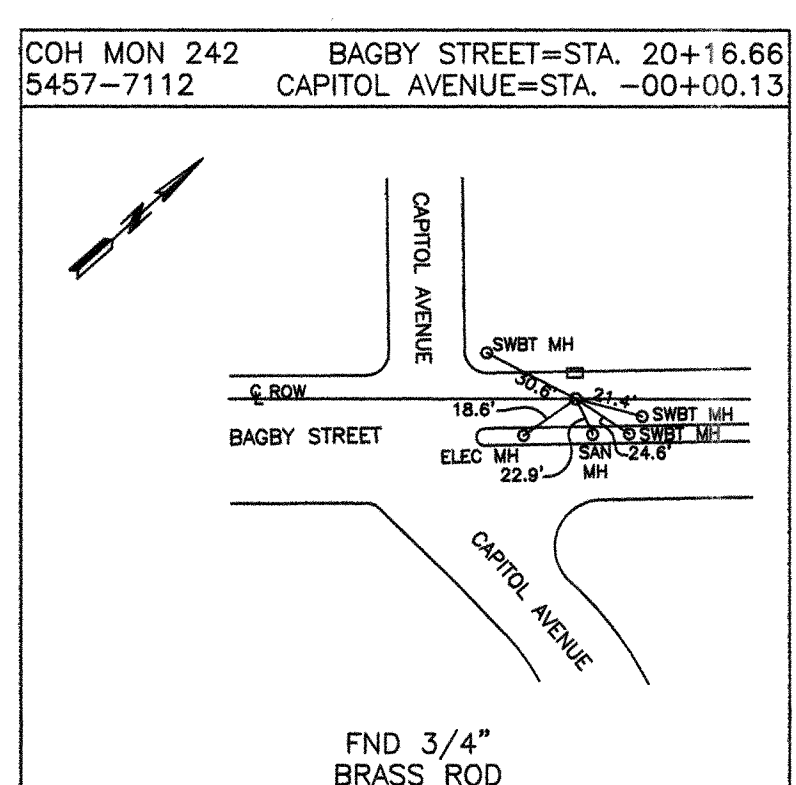
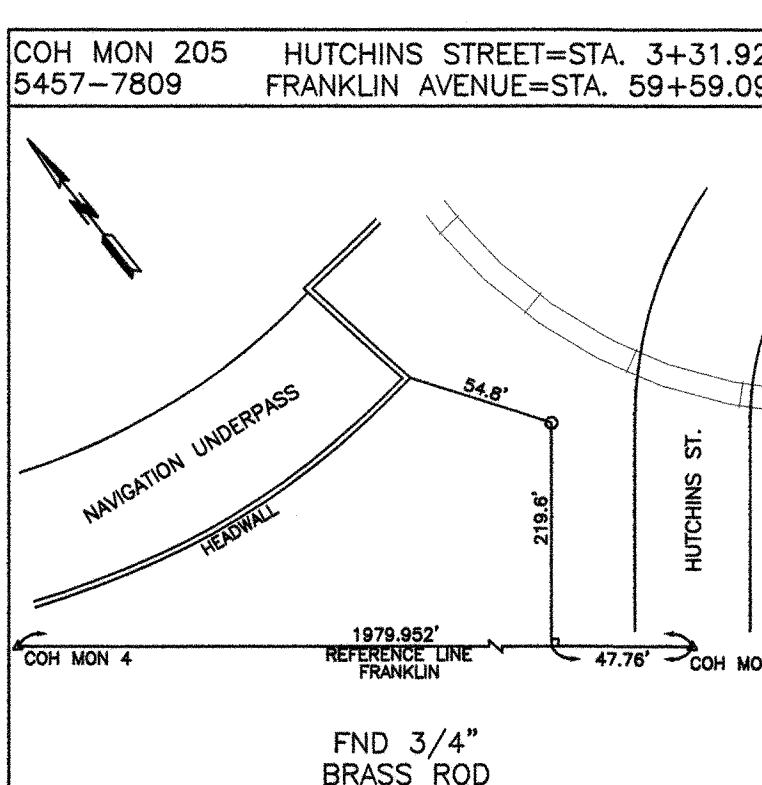
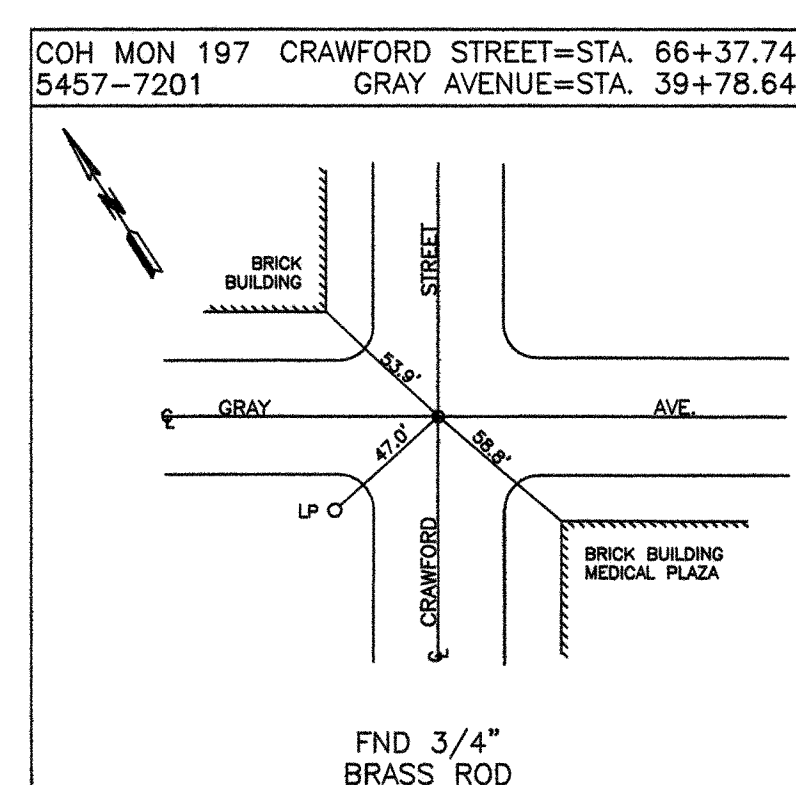
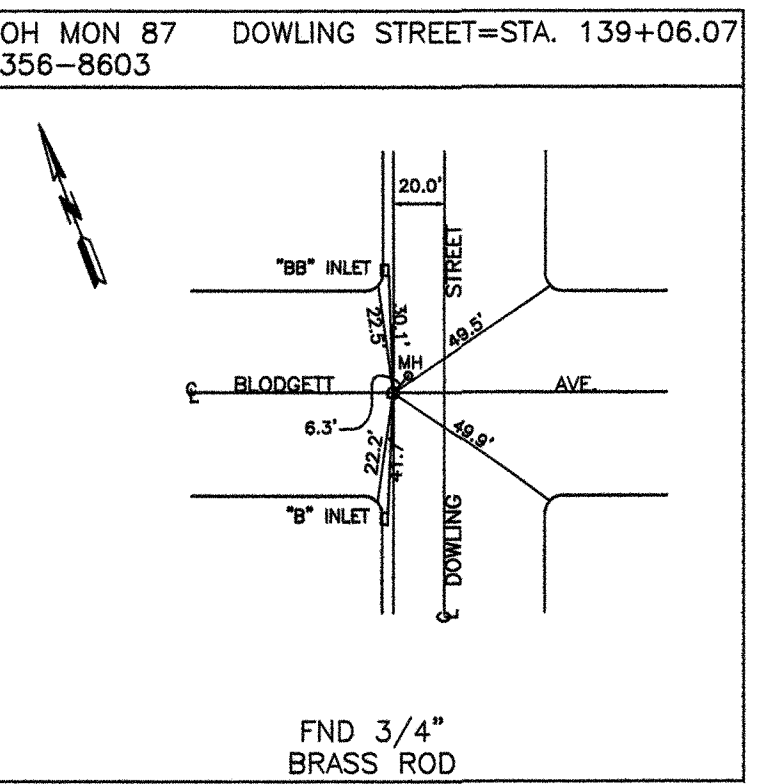
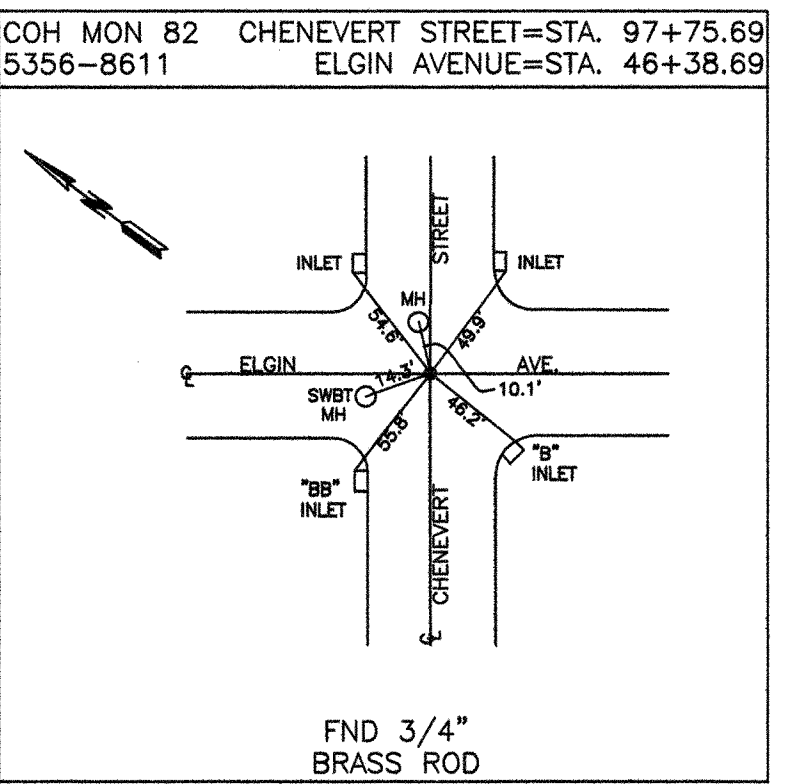
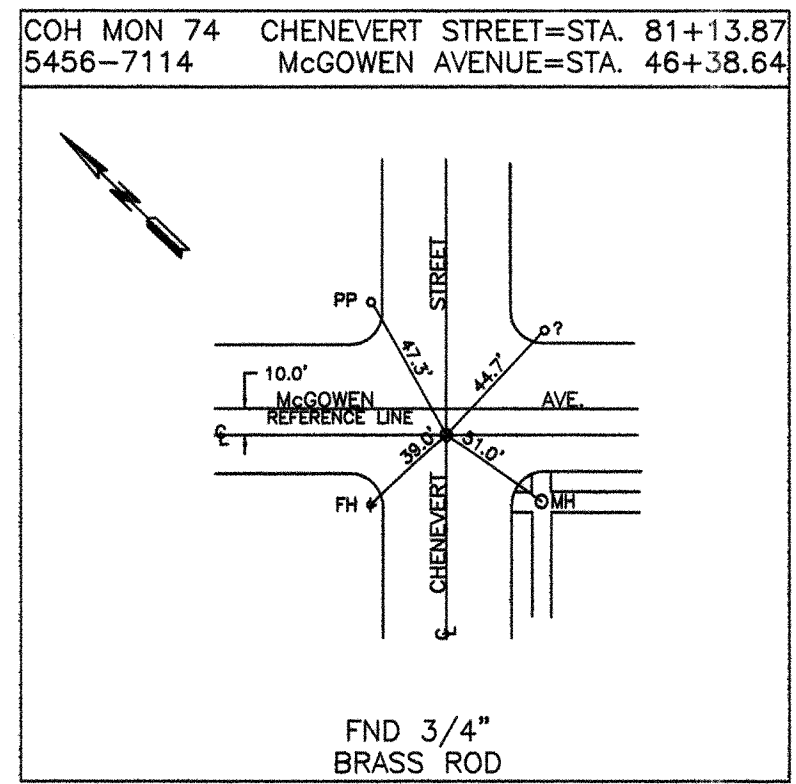
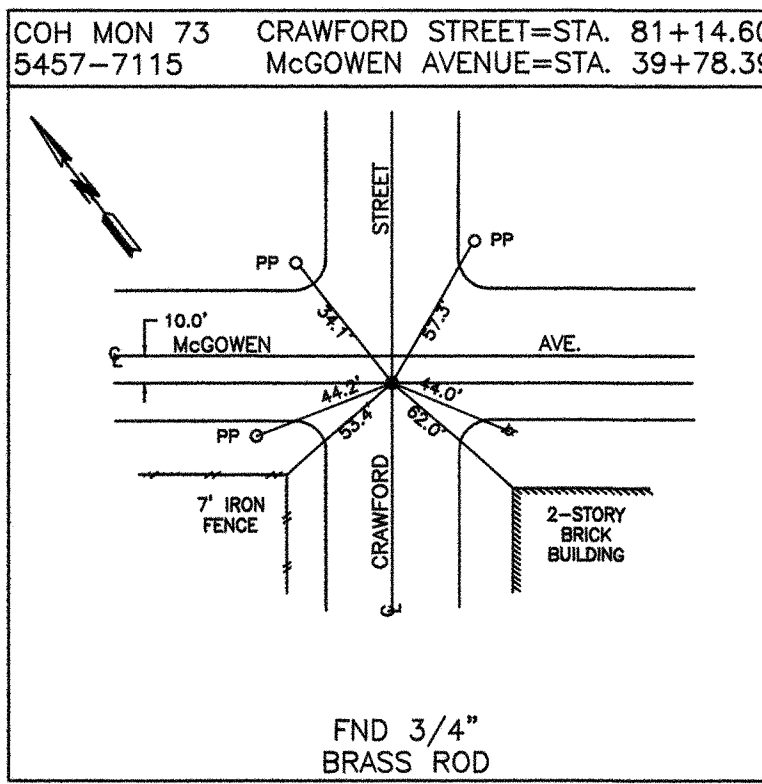
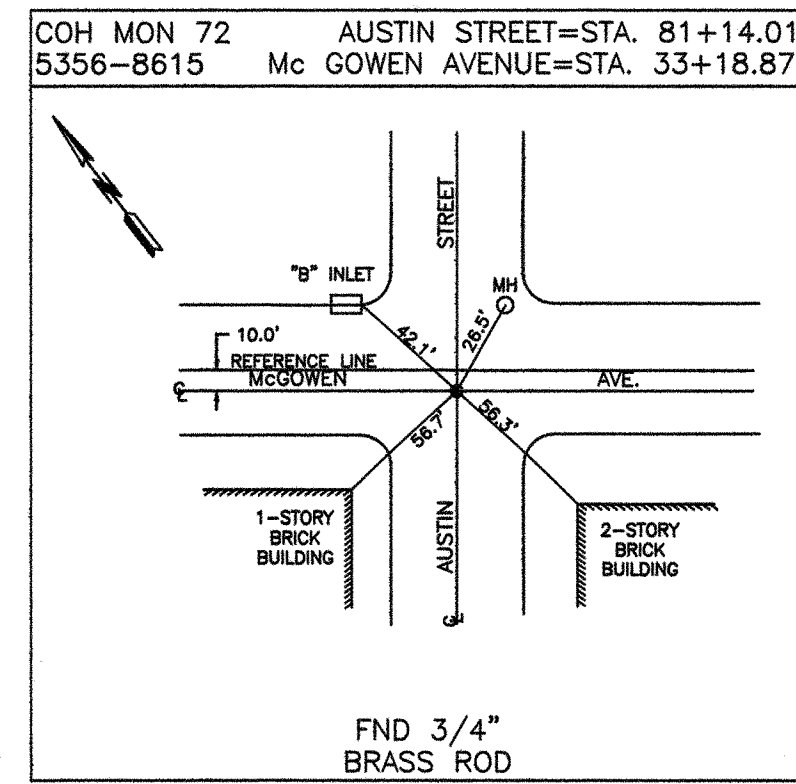
SHEET NO. 1

GPS NUMBER	N-0645-04-3
DRAWING SCALE	N.T.S.
CITY OF HOUSTON PM	
SHEET NO.	5 OF 9

I, JACK CHILES, HEREBY CERTIFY THAT THIS DRAWING CORRECTLY REPRESENTS A SURVEY MADE ON THE GROUND BY ME, OR UNDER MY SUPERVISION.

Jack Chiles
J. CHILES
R.P.L.S. #4778





- NOTES:
- ALL COORDINATES SHOWN HEREON ARE EXPRESSED IN U.S. SURVEY FEET.
 - ALL POINTS SHOWN HEREON ARE REFERENCED TO THE TEXAS COORDINATE SYSTEM, SOUTH CENTRAL ZONE, NORTH AMERICAN DATUM OF 1983, CORRS 96 (EPOCH 2002.00).
 - THE PRIMARY CONTROL POINTS USED FOR THIS PROJECT ARE CITY OF HOUSTON COOPERATIVE CORRS MONUMENTS AS FOLLOWS:
COH2, NGS PID# DF8773 N=13,793,560.96 E=3,108,315.43
COH3, NGS PID# DF8775 N=13,800,460.33 E=3,155,320.54
COH4, NGS PID# DF8777 N=13,851,729.27 E=3,168,870.88
 - ALL MEASUREMENTS MADE WITH CONVENTIONAL SURVEYING EQUIPMENT WERE REDUCED TO GRID EMPLOYING A COMBINED SCALE FACTOR OF 0.999891800.

LEGEND
*MONUMENT NOT RECOVERED IN FIELD. POSITION CALCULATED FROM RECOVERED COH REFERENCE POINTS.

RODS
Surveying, Inc.
6810 LEE ROAD
SPRING, TEXAS 77379
TEL (281) 257-4020
FAX (281) 257-4021

PRIVATE UTILITY LINES SHOWN

RELIANT ENERGY ENTEX, INC.

SWBT CO. VALID FOR ONE YEAR
APPROVED ONLY FOR UNDERGROUND CONDUIT FACILITIES
UNLESS NOTED.

RELIANT ENERGY
HOUSTON LIGHTING & POWER CO.
APPROVED ONLY FOR CROSSING UNDERGROUND DUCTLINES
UNLESS NOTED. VALID AT TIME OF REVIEW ONLY.

CABLE COMPANY

RODS SURVEY, INC.
6810 LEE RD.
SPRING, TX 77379
TEL: 281-257-4020

SURVEYED BY: L.A.
FB NO. P-5428

CITY OF HOUSTON
DEPARTMENT OF PUBLIC WORKS AND ENGINEERING

**DOWNTOWN CENTERLINE
REFERENCE ROD SYSTEM
REVITALIZATION**

SHEET NO. 2

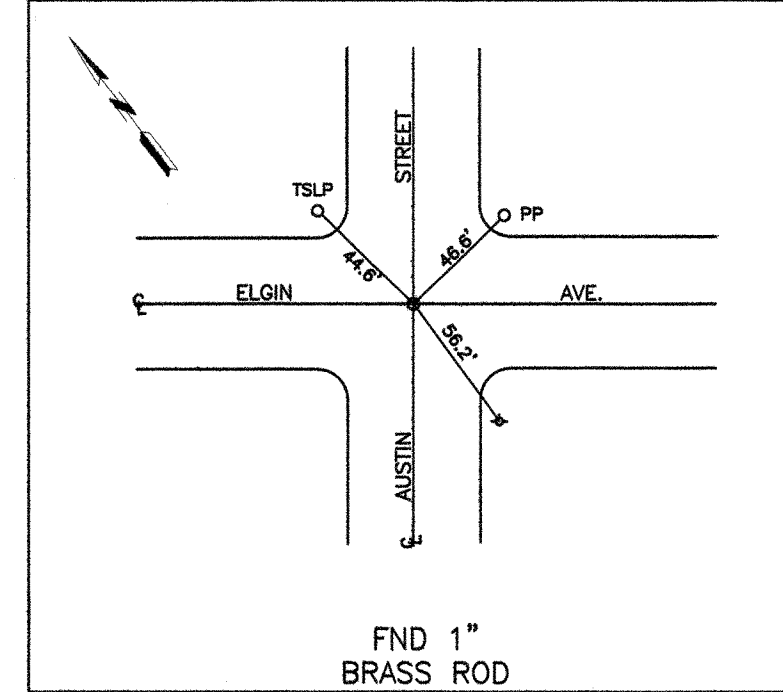
GPS NUMBER	N-0645-04-3
DRAWING SCALE	N.T.S.
CITY OF HOUSTON PM	
SHEET NO.	6 OF 9

I, JACK CHILES, HEREBY CERTIFY THAT THIS DRAWING CORRECTLY REPRESENTS A SURVEY MADE ON THE GROUND BY ME, OR UNDER MY SUPERVISION.

Jack Chiles
J. CHILES
R.P.L.S. #4778

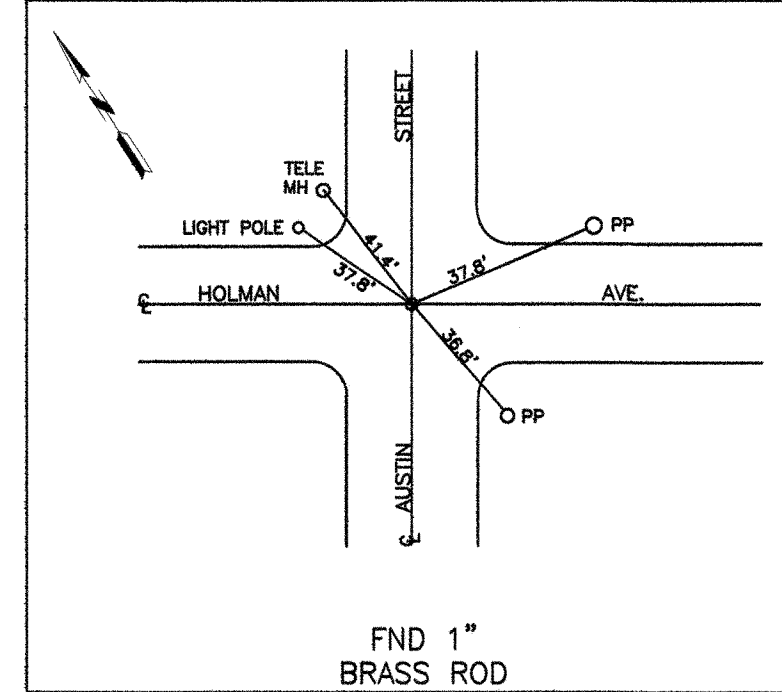


COH MON 409 AUSTIN STREET=STA. 97+74.65
5356-8512 ELGIN AVENUE=STA. 33+18.97



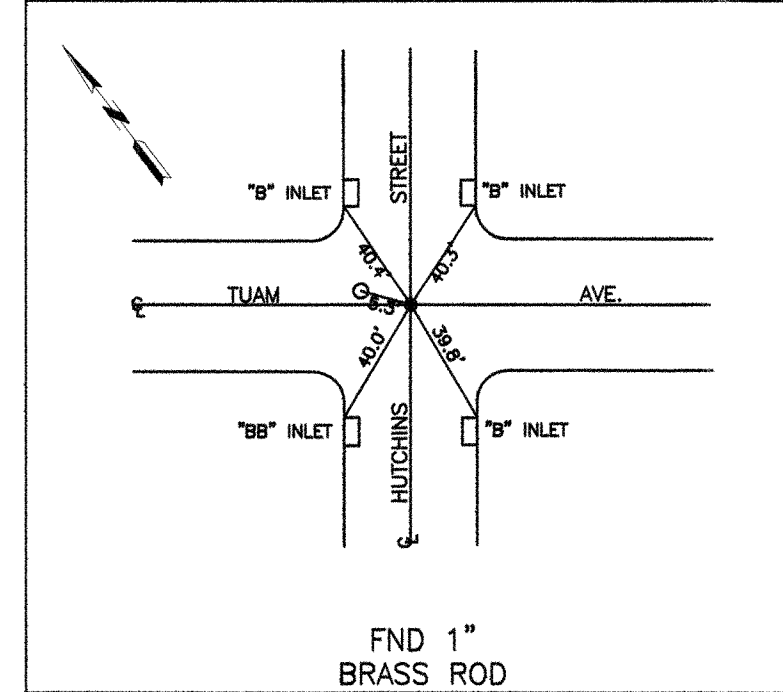
FND 1" BRASS ROD

COH MON 422 AUSTIN STREET=STA. 105+95.18
5356-8411 HOLMAN AVENUE=STA. 33+19.06



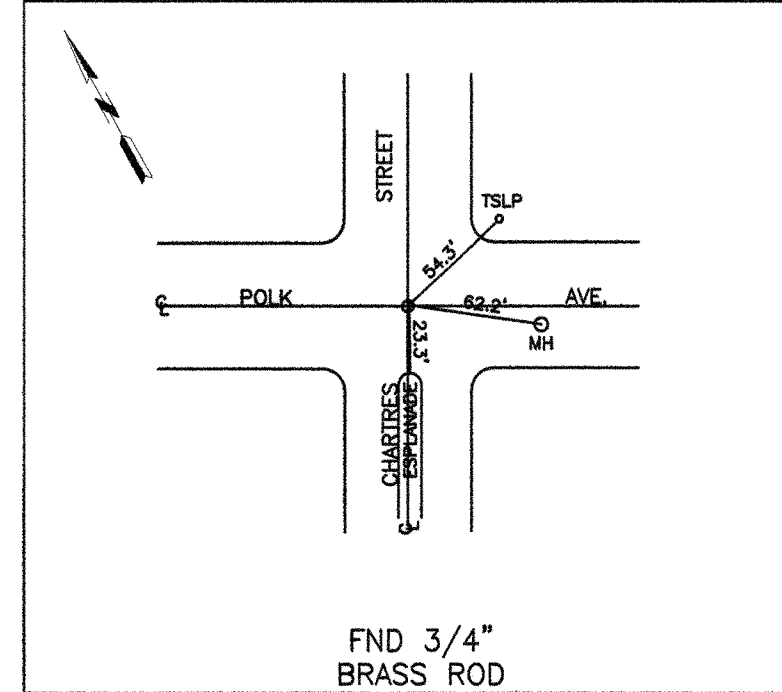
FND 1" BRASS ROD

COH MON 600 HUTCHINS STREET=STA. 89+44.57
5456-7211 TUAM AVENUE=STA. 59+58.87



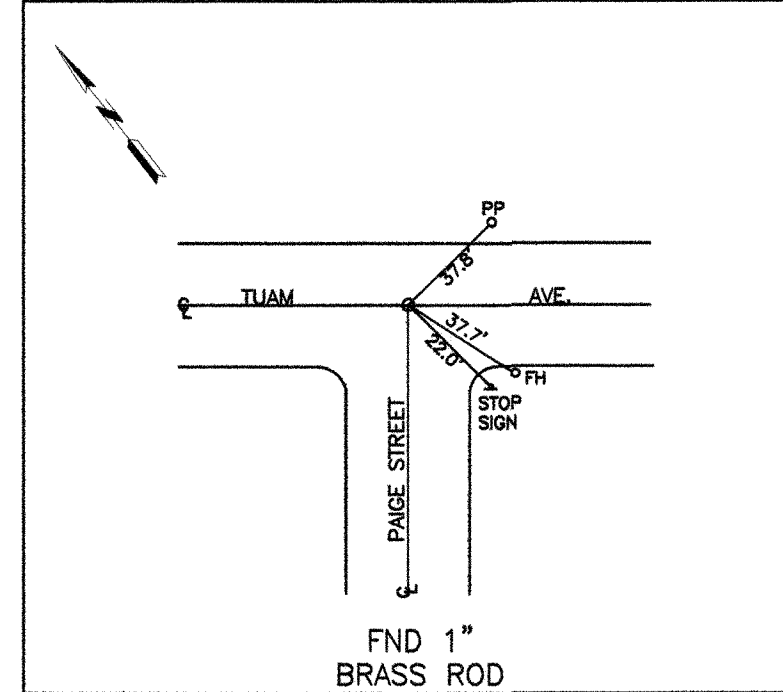
FND 1" BRASS ROD

COH MON 601 CHARTRES AVENUE=STA. 39+97.65
5457-7504 POLK AVENUE=STA. 52+99.09



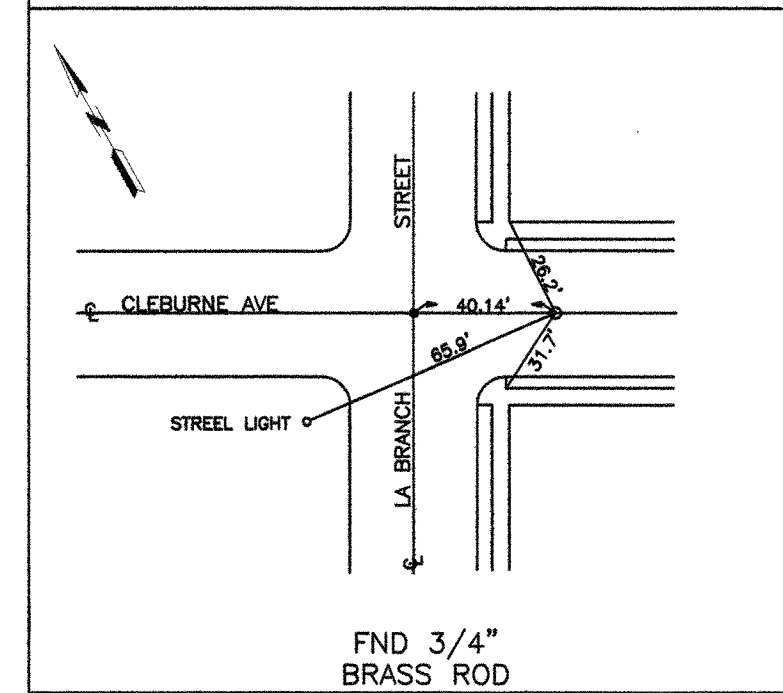
FND 3/4" BRASS ROD

COH MON 608 TUAM AVENUE=STA. 82+70.25
5456-7409



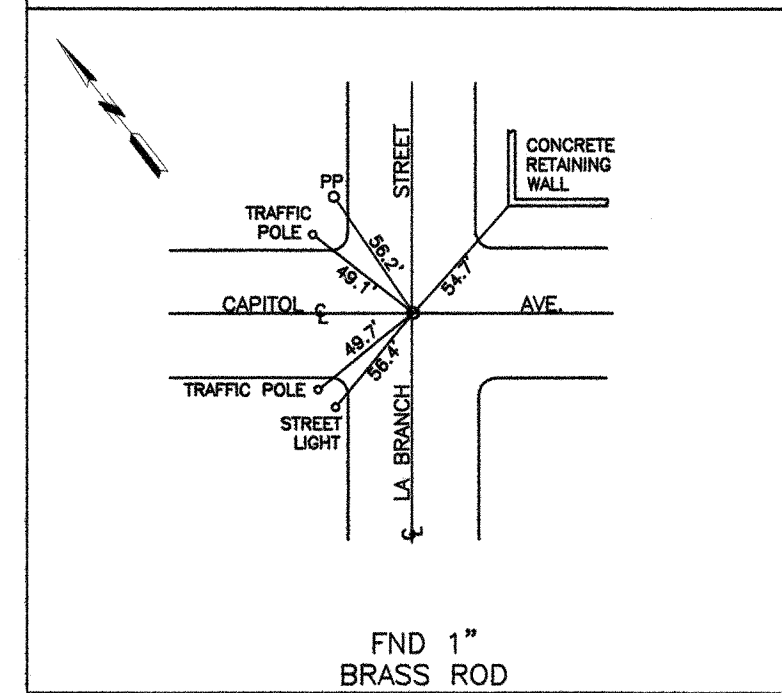
FND 1" BRASS ROD

COH MON 614 LA BRANCH ST=STA. 122+45.67
5356-8408 CLEBURNE AVENUE=STA. 36+88.80



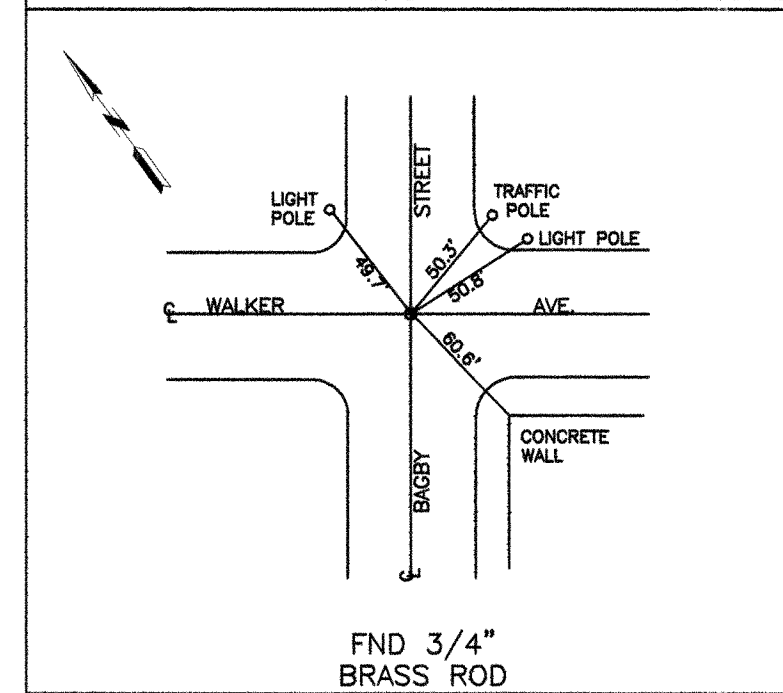
FND 3/4" BRASS ROD

COH MON 634 LA BRANCH ST=STA. 20+16.83
5457-7408 CAPITOL AVENUE=STA. 36+49.22



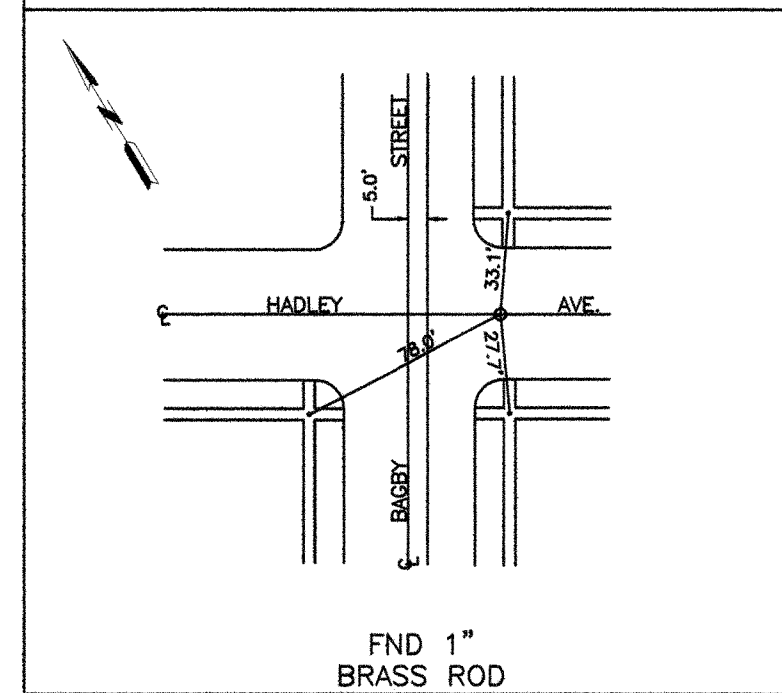
FND 1" BRASS ROD

COH MON 715 BAGBY STREET=STA. 26+77.34
5357-8611 WALKER AVENUE=STA. 0+00.12



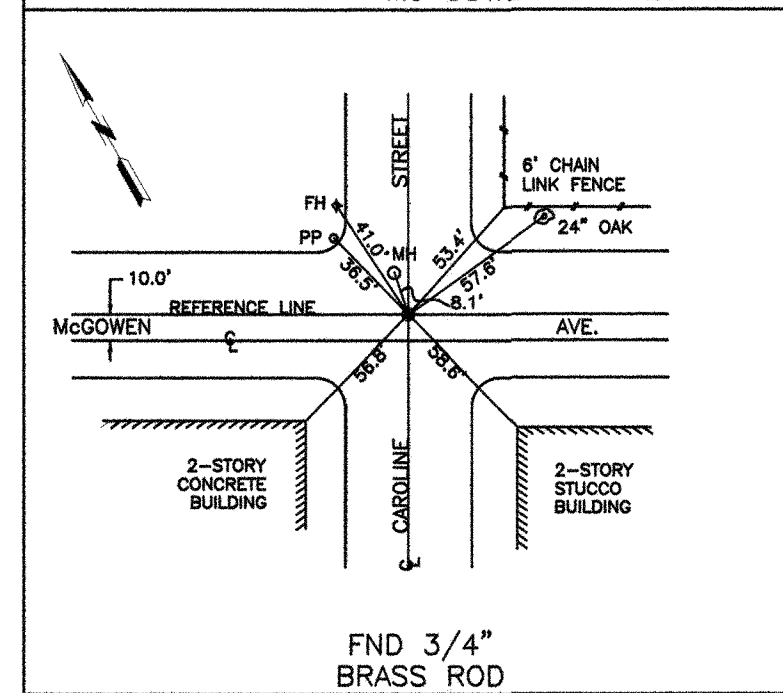
FND 3/4" BRASS ROD

COH MON 769 BAGBY STREET=STA. 72+92.02
5357-8304 HADLEY AVENUE=STA. 0+42.38



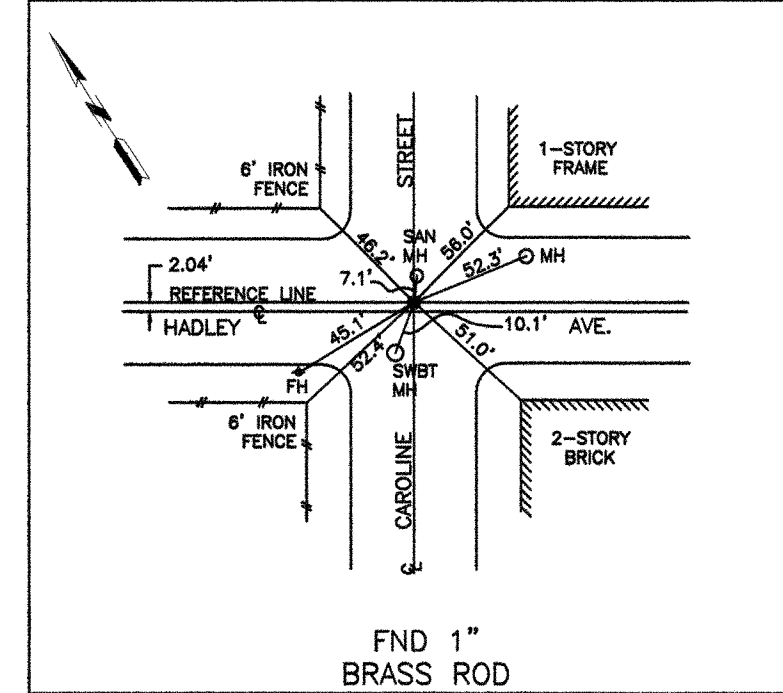
FND 1" BRASS ROD

COH MON 816 CAROLINE STREET=STA. 81+13.47
5356-8515 Mc GOWEN=STA. 29+88.67



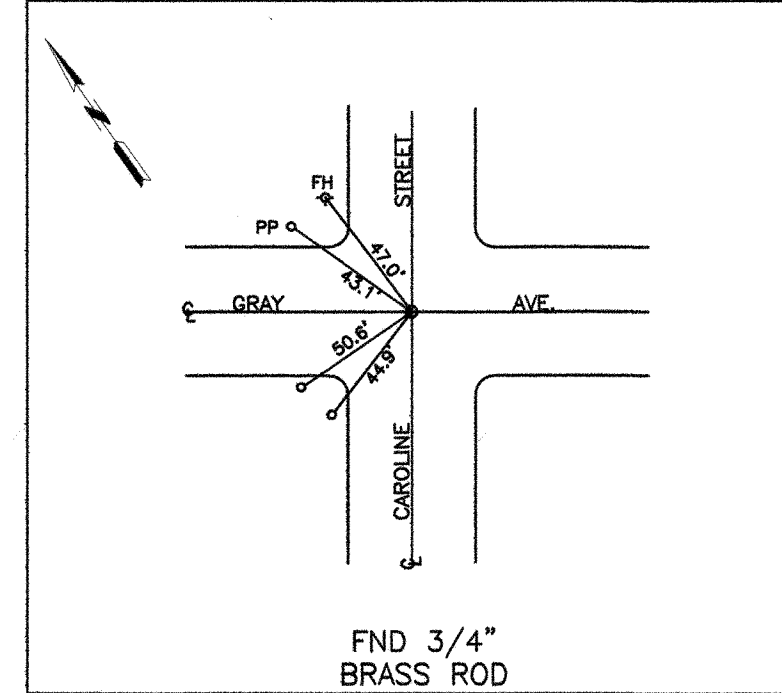
FND 3/4" BRASS ROD

COH MON 817 CAROLINE STREET=STA. 72+92.49
5357-8601 HADLEY AVENUE=STA. 29+88.68



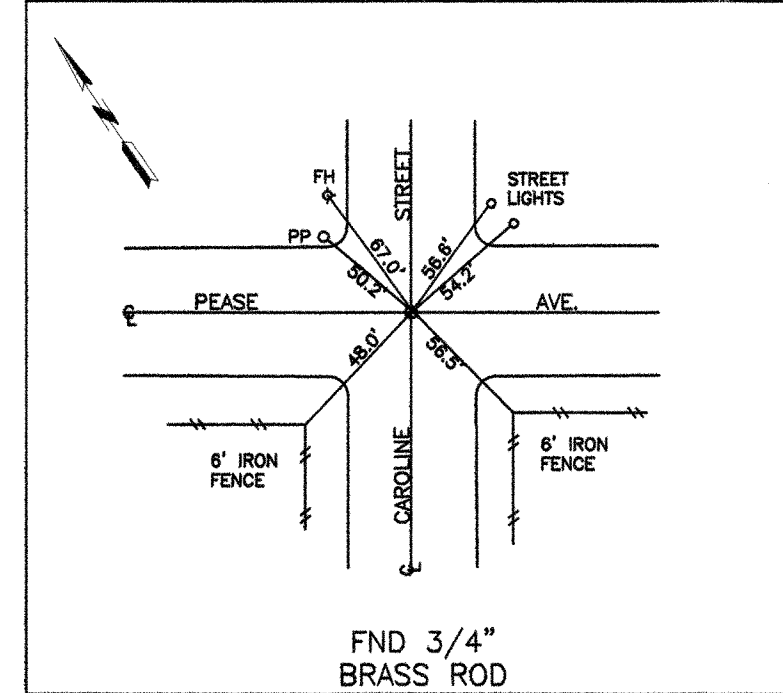
FND 1" BRASS ROD

COH MON 818 CAROLINE STREET=STA. 66+37.78
5457-7102 GRAY AVENUE=STA. 29+88.78



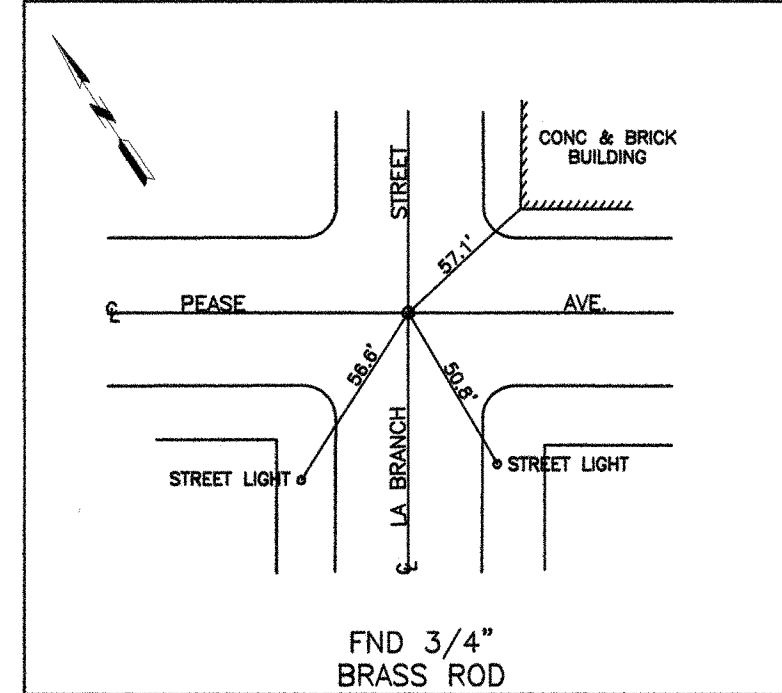
FND 3/4" BRASS ROD

COH MON 819 CAROLINE STREET=STA. 53+17.46
5457-7204 PEASE AVENUE=STA. 29+89.14



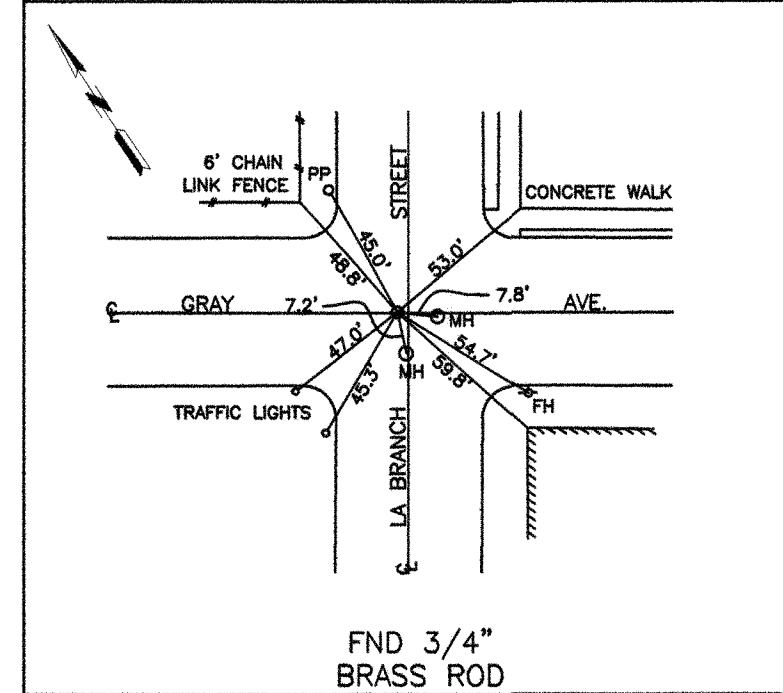
FND 3/4" BRASS ROD

COH MON 823 LA BRANCH ST=STA. 53+17.86
5457-7203 PEASE AVENUE=STA. 36+48.81



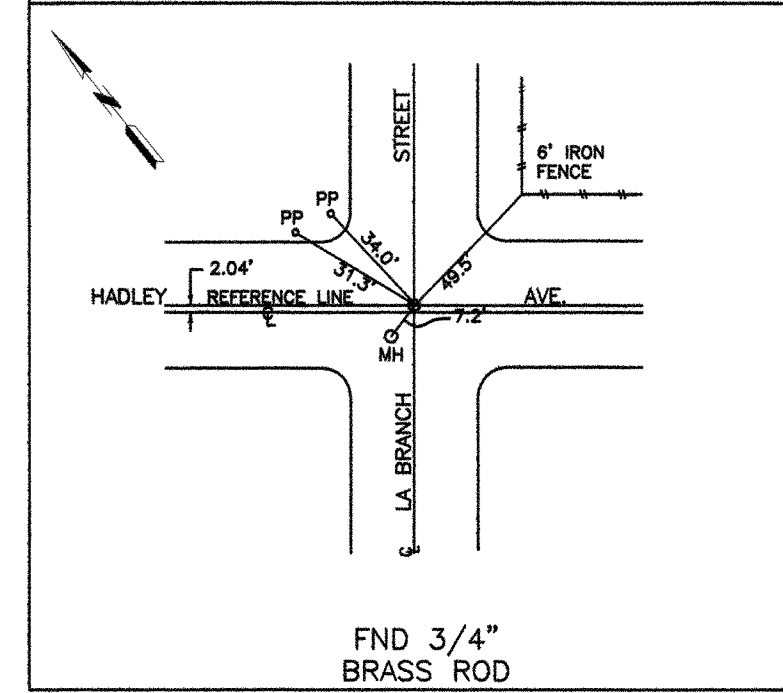
FND 3/4" BRASS ROD

COH MON 824 LA BRANCH ST=STA. 66+37.78
7457-7101B GRAY AVENUE=STA. 36+48.53



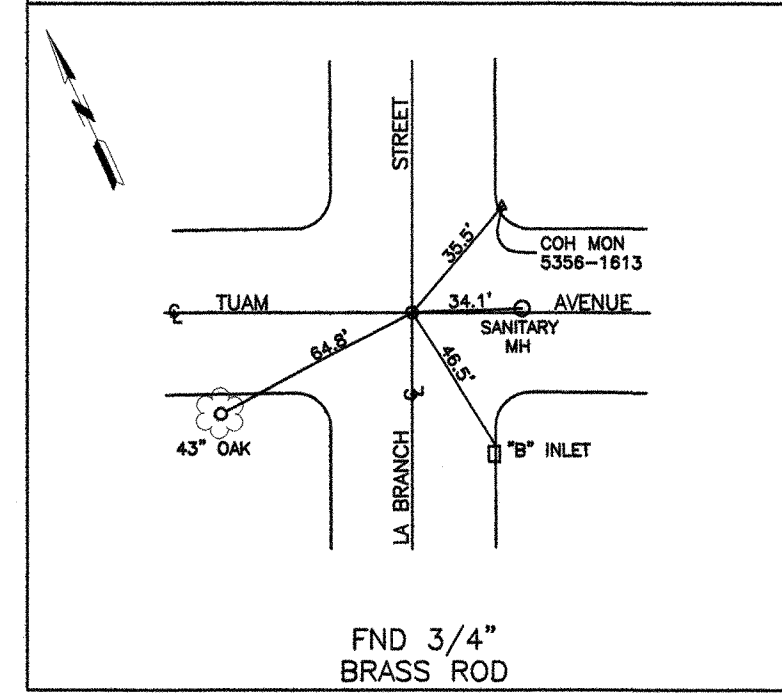
FND 3/4" BRASS ROD

COH MON 825 LA BRANCH ST=STA. 72+92.76
5456-7116 HADLEY AVENUE=STA. 36+48.52



FND 3/4" BRASS ROD

COH MON 846 LA BRANCH ST=STA. 89+44.20
5356-8613 TUAM AVENUE=STA. 36+48.68



FND 3/4" BRASS ROD

NOTES:

- ALL COORDINATES SHOWN HEREON ARE EXPRESSED IN U.S. SURVEY FEET.
- ALL POINTS SHOWN HEREON ARE REFERENCED TO THE TEXAS COORDINATE SYSTEM, SOUTH CENTRAL ZONE, NORTH AMERICAN DATUM OF 1983, CORS 96 (EPOCH 2002.00).
- THE PRIMARY CONTROL POINTS USED FOR THIS PROJECT ARE CITY OF HOUSTON COOPERATIVE CORS MONUMENTS AS FOLLOWS:
COH2, NGS PID# DFB773 N=13,793,560.96 E=3,108,315.43
COH3, NGS PID# DFB775 N=13,800,460.33 E=3,155,320.54
COH4, NGS PID# DFB777 N=13,851,729.27 E=3,168,870.88
- ALL MEASUREMENTS MADE WITH CONVENTIONAL SURVEYING EQUIPMENT WERE REDUCED TO GRID EMPLOYING A COMBINED SCALE FACTOR OF 0.999891800.

LEGEND

*=MONUMENT NOT RECOVERED IN FIELD. POSITION CALCULATED FROM RECOVERED COH REFERENCE POINTS.

RODS
Surveying, Inc.
8810 LEE ROAD
SPRING, TEXAS 77379
TEL (281) 257-4020
FAX (281) 257-4021

PRIVATE UTILITY LINES SHOWN

RELIANT ENERGY ENTEX, INC.

SWBT CO. VALID FOR ONE YEAR
APPROVED ONLY FOR UNDERGROUND CONDUIT FACILITIES
UNLESS NOTED.

RELIANT ENERGY
HOUSTON LIGHTING & POWER CO.
APPROVED ONLY FOR CROSSING UNDERGROUND DUCTLINES
UNLESS NOTED. VALID AT TIME OF REVIEW ONLY.

CABLE COMPANY

RODS SURVEY, INC.
6810 LEE RD.
SPRING, TX 77379
TEL: 281-257-4020

SURVEYED BY: L.A.
FB NO. P-5428

CITY OF HOUSTON
DEPARTMENT OF PUBLIC WORKS AND ENGINEERING

**DOWNTOWN CENTERLINE
REFERENCE ROD SYSTEM
REVITALIZATION**

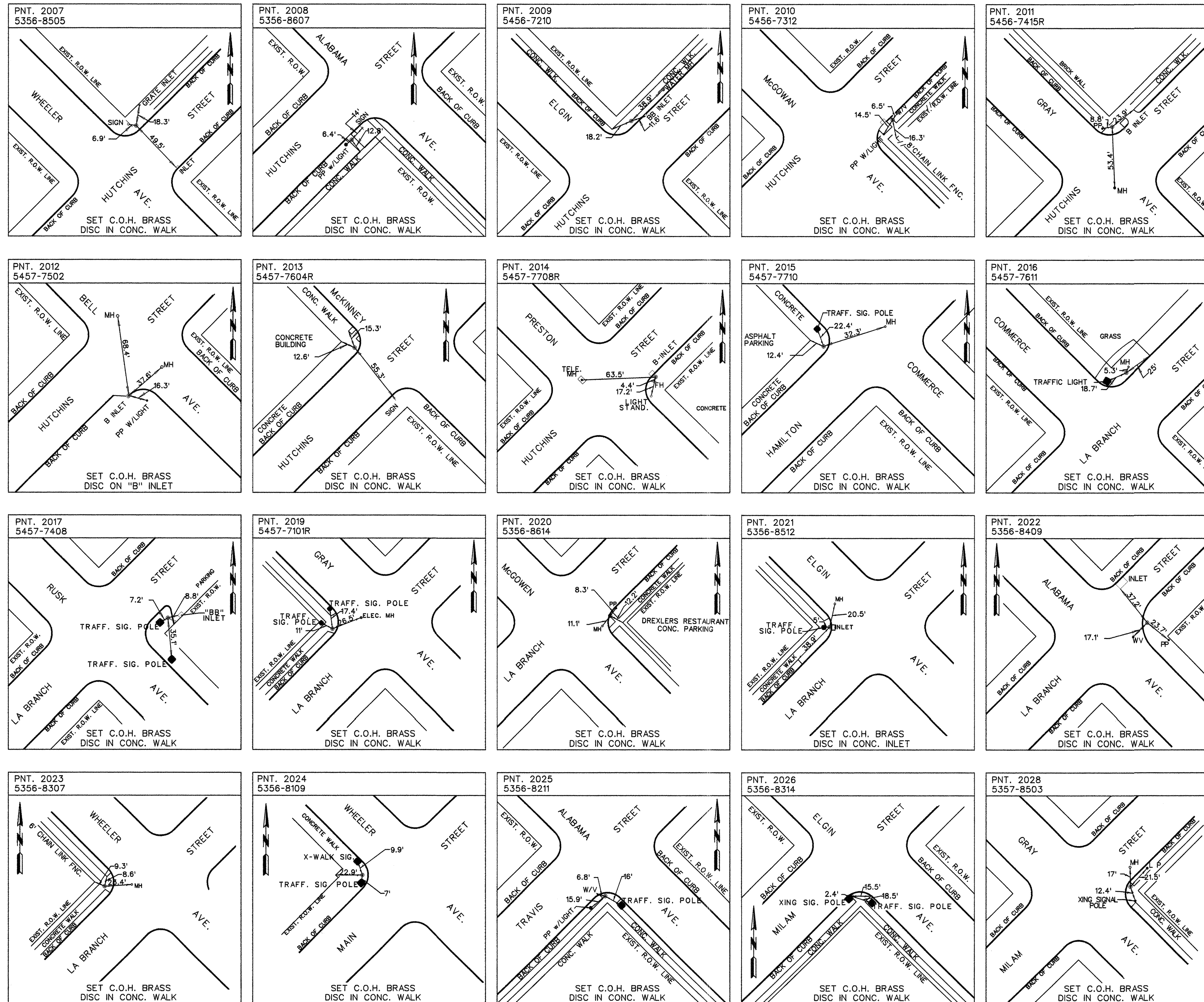
SHEET NO. 3

GPS NUMBER	N-0645-04-3
DRAWING SCALE	N.T.S.
CITY OF HOUSTON PM	
SHEET NO. 7 OF 9	

I, JACK CHILES, HEREBY CERTIFY THAT THIS DRAWING CORRECTLY REPRESENTS A SURVEY MADE ON THE GROUND BY ME, OR UNDER MY SUPERVISION.

Jack Chiles
R.L.S. #4778

STATE OF TEXAS
REGISTERED
JACK R. CHILES
4778
PROFESSIONAL
LAND SURVEYOR



- NOTES:
1. ALL COORDINATES SHOWN HEREON ARE EXPRESSED IN U.S. SURVEY FEET.
 2. ALL POINTS SHOWN HEREON ARE REFERENCED TO THE TEXAS COORDINATE SYSTEM, SOUTH CENTRAL ZONE, NORTH AMERICAN DATUM OF 1983, CORS 96 (EPOCH 2002.00).
 3. THE PRIMARY CONTROL POINTS USED FOR THIS PROJECT ARE CITY OF HOUSTON COOPERATIVE CORNS MONUMENTS AS FOLLOWS:
 COH2, NGS PID# DF8773 N=13,793,560.96 E=3,108,315.43
 COH3, NGS PID# DF8775 N=13,800,460.33 E=3,155,320.54
 COH4, NGS PID# DF8777 N=13,851,729.27 E=3,168,870.88
 4. ALL MEASUREMENTS MADE WITH CONVENTIONAL SURVEYING EQUIPMENT WERE REDUCED TO GRID EMPLOYING A COMBINED SCALE FACTOR OF 0.999891800.

LEGEND
 * = MONUMENT NOT RECOVERED IN FIELD. POSITION CALCULATED FROM RECOVERED COH REFERENCE POINTS.



PRIVATE UTILITY LINES SHOWN

RELIANT ENERGY ENTECH, INC.

SWBT CO. VALID FOR ONE YEAR
 APPROVED ONLY FOR UNDERGROUND CONDUIT FACILITIES UNLESS NOTED.

RELIANT ENERGY HOUSTON LIGHTING & POWER CO.
 APPROVED ONLY FOR CROSSING UNDERGROUND DUCTLINES UNLESS NOTED. VALID AT TIME OF REVIEW ONLY.

CABLE COMPANY

RODS SURVEY, INC.
 6810 LEE RD.
 SPRING, TX 77379
 TEL: 281-257-4020

SURVEYED BY: L.A.
 FB NO. P-5428

CITY OF HOUSTON
 DEPARTMENT OF PUBLIC WORKS AND ENGINEERING

DOWNTOWN CENTERLINE
 REFERENCE ROD SYSTEM
 REVITALIZATION

SHEET NO. 4

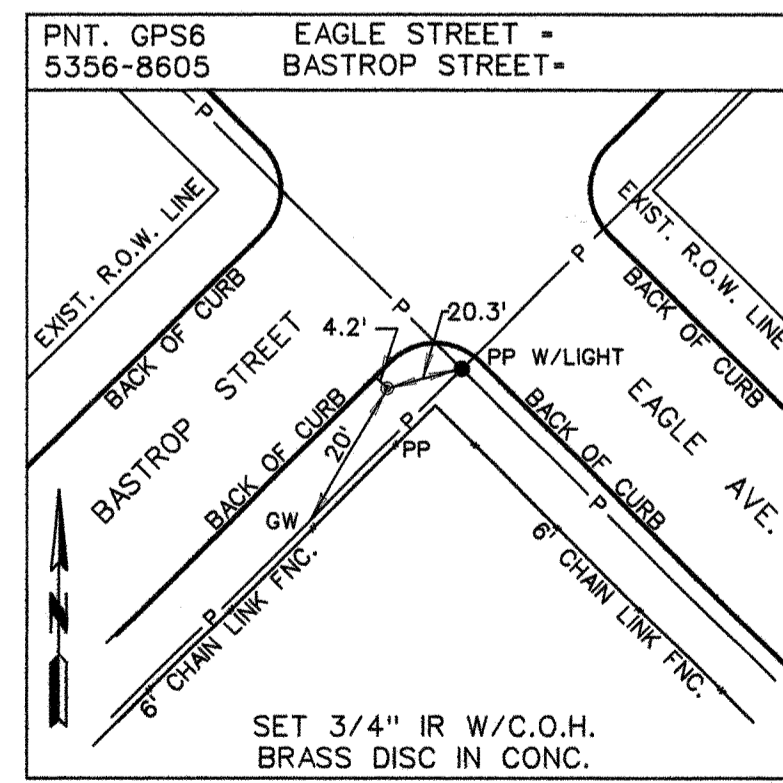
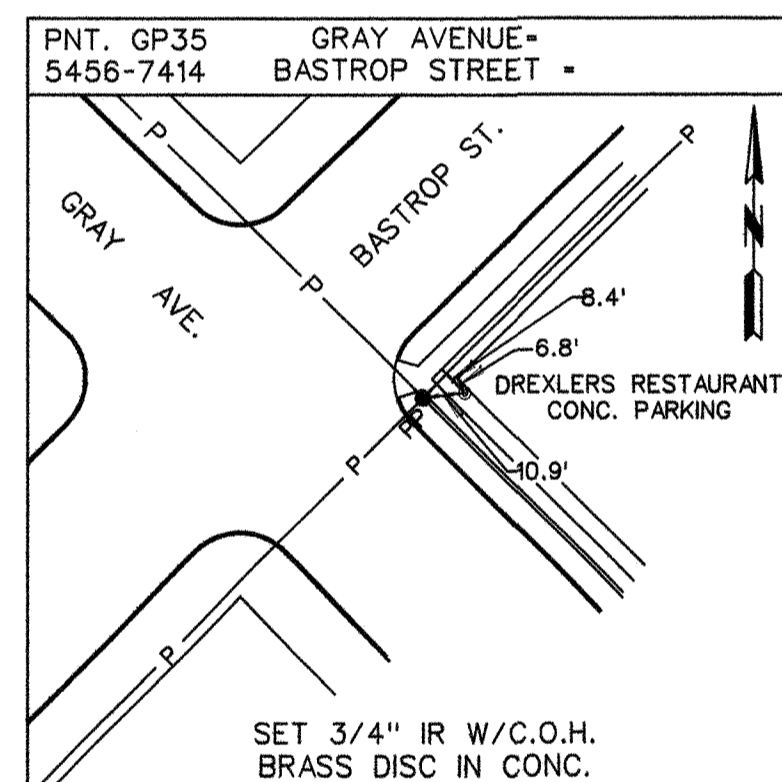
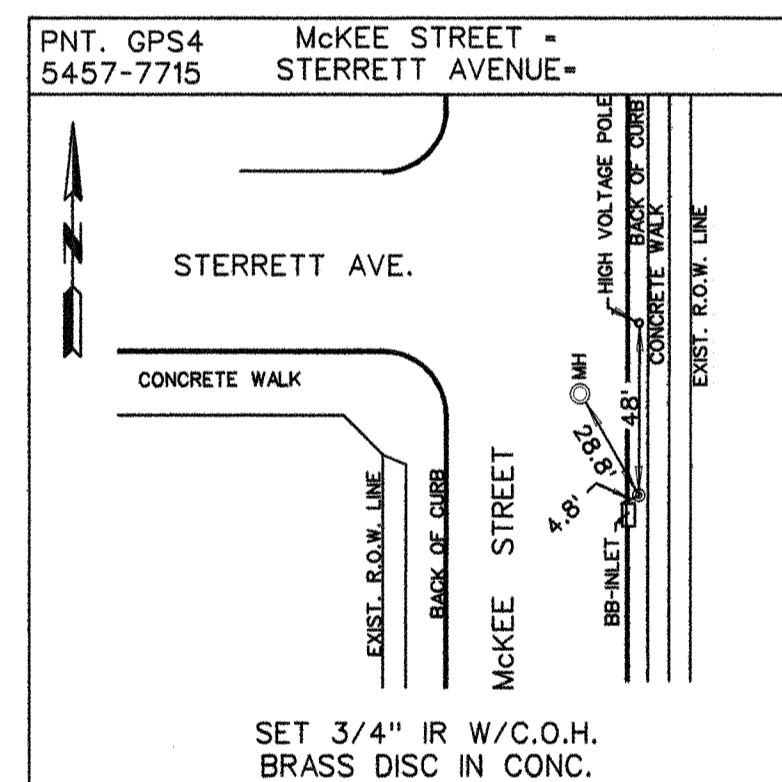
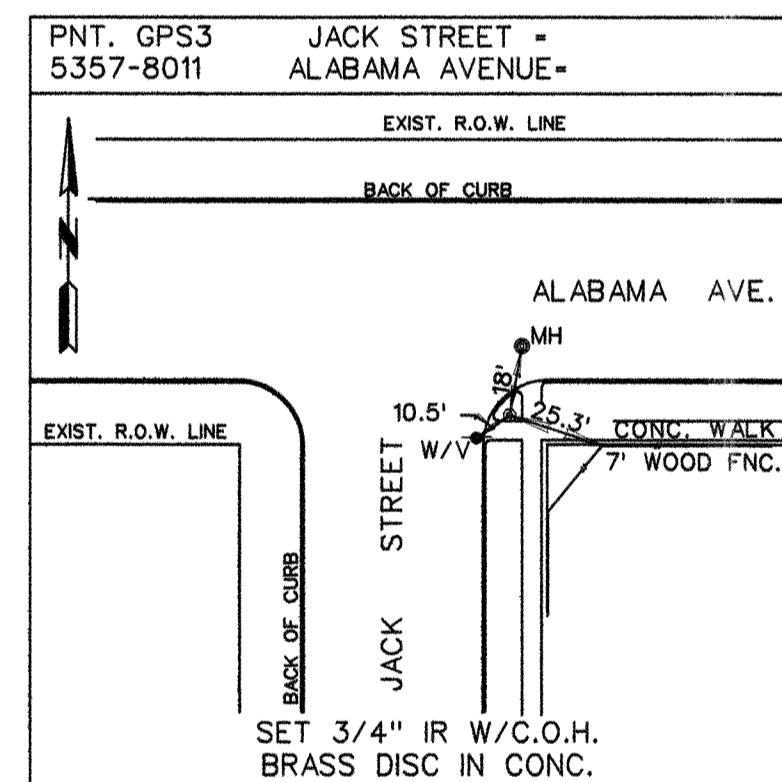
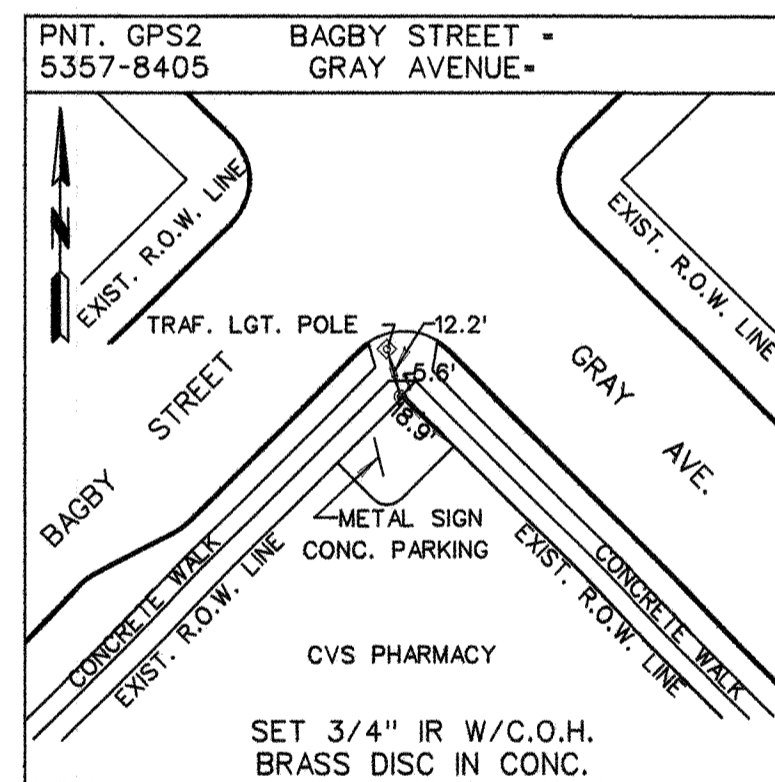
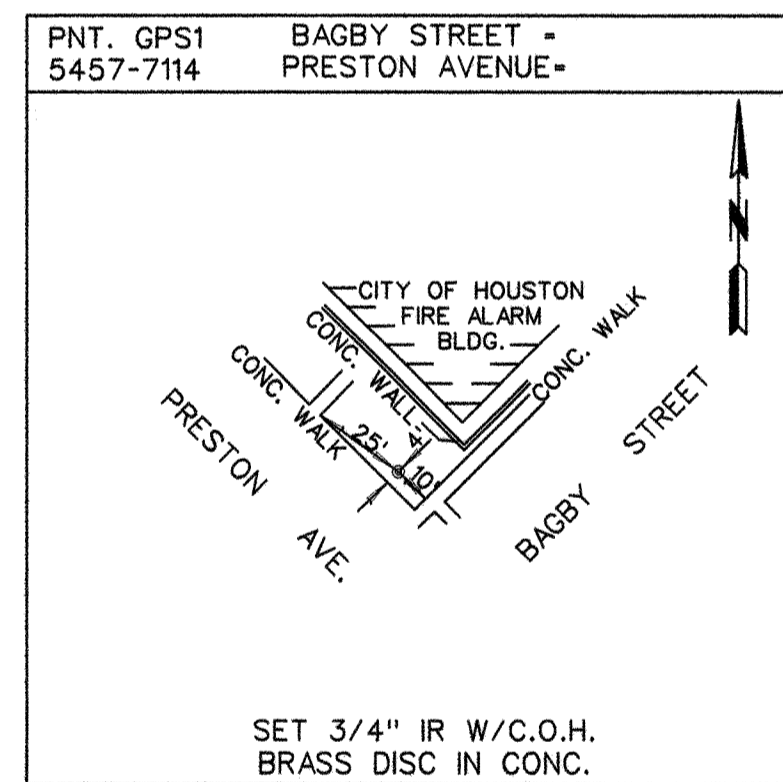
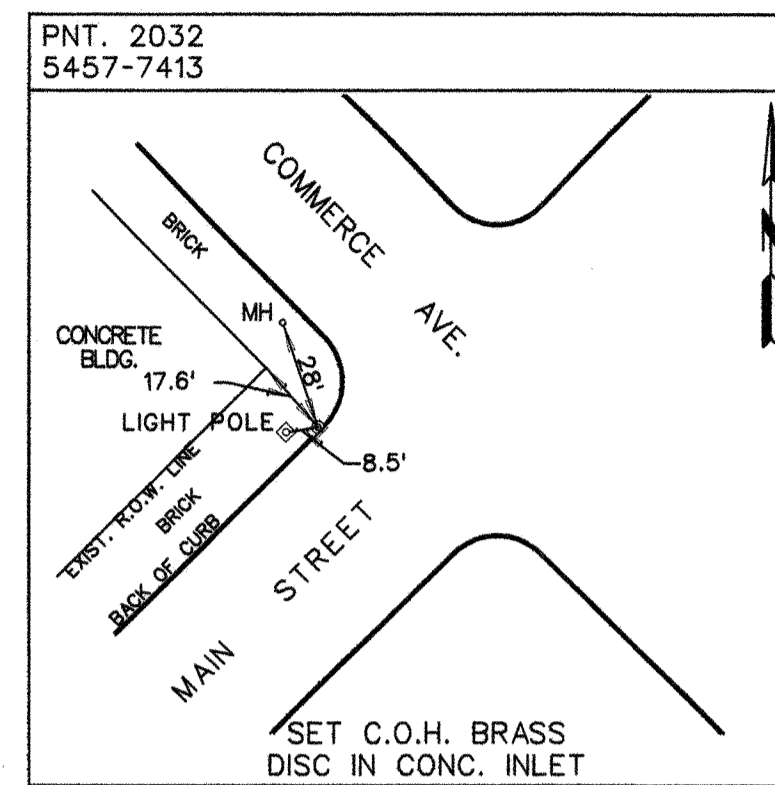
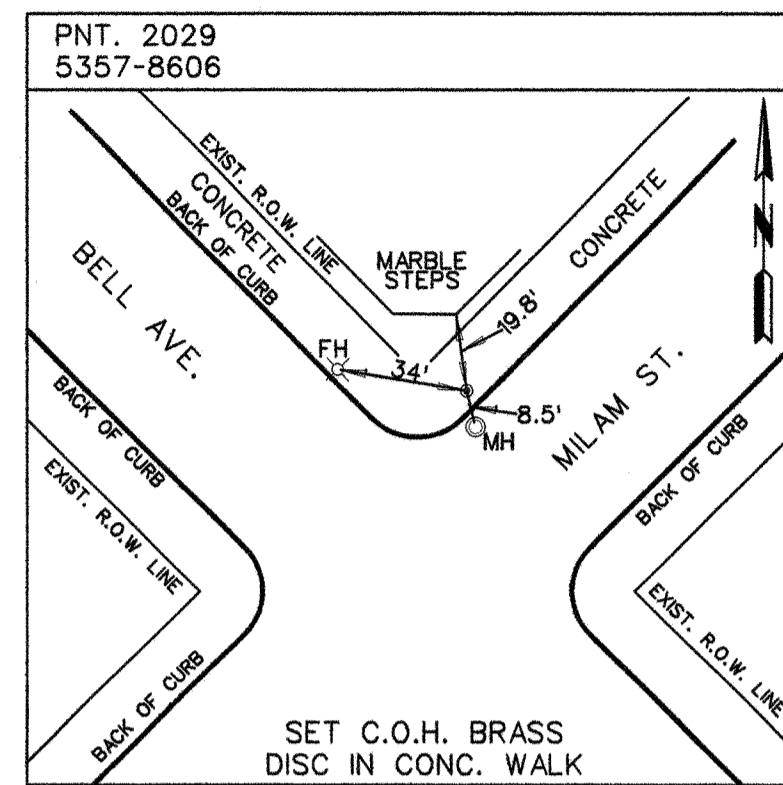
GPS NUMBER	N-0645-04-3
DRAWING SCALE	N.T.S.
CITY OF HOUSTON PM	
SHEET NO.	8 OF 9

Jack Chiles
 JACK CHILES
 R.F.L.S. #4778



I, JACK CHILES, HEREBY CERTIFY THAT THIS DRAWING CORRECTLY REPRESENTS A SURVEY MADE ON THE GROUND BY ME, OR UNDER MY SUPERVISION.

No.	Date	Revisions



- NOTES:
1. ALL COORDINATES SHOWN HEREON ARE EXPRESSED IN U.S. SURVEY FEET.
 2. ALL POINTS SHOWN HEREON ARE REFERENCED TO THE TEXAS COORDINATE SYSTEM, SOUTH CENTRAL ZONE, NORTH AMERICAN DATUM OF 1983, CORS 96 (EPOCH 2002.00).
 3. THE PRIMARY CONTROL POINTS USED FOR THIS PROJECT ARE CITY OF HOUSTON COOPERATIVE CORNS MONUMENTS AS FOLLOWS:
COH2, NGS PID# DF8773 N=13,793,560.96 E=3,108,315.43
COH3, NGS PID# DF8775 N=13,800,460.33 E=3,155,320.54
COH4, NGS PID# DF8777 N=13,851,729.27 E=3,168,870.88
 4. ALL MEASUREMENTS MADE WITH CONVENTIONAL SURVEYING EQUIPMENT WERE REDUCED TO GRID EMPLOYING A COMBINED SCALE FACTOR OF 0.999891800.

LEGEND
 *MONUMENT NOT RECOVERED IN FIELD. POSITION CALCULATED FROM RECOVERED COH REFERENCE POINTS.

RODS
 Surveying, Inc.
 6810 LEE ROAD
 SPRING, TEXAS 77379
 TEL (281) 257-4020
 FAX (281) 257-4021

PRIVATE UTILITY LINES SHOWN

RELIANT ENERGY ENTEX, INC.

SWBT CO. VALID FOR ONE YEAR
 APPROVED ONLY FOR UNDERGROUND CONDUIT FACILITIES UNLESS NOTED.

RELIANT ENERGY HOUSTON LIGHTING & POWER CO.
 APPROVED ONLY FOR CROSSING UNDERGROUND DUCTLINES UNLESS NOTED. VALID AT TIME OF REVIEW ONLY.

CABLE COMPANY

RODS SURVEY, INC.
 6810 LEE RD.
 SPRING, TX 77379
 TEL: 281-257-4020

SURVEYED BY: L.A.
 FB NO. P-5428

CITY OF HOUSTON
 DEPARTMENT OF PUBLIC WORKS AND ENGINEERING

DOWNTOWN CENTERLINE REFERENCE ROD SYSTEM REVITALIZATION

SHEET NO. 5

GFS NUMBER	N-0645-04-3
DRAWING SCALE	N.T.S.
CITY OF HOUSTON PM	
SHEET NO.	9 OF 9

I, JACK CHILES, HEREBY CERTIFY THAT THIS DRAWING CORRECTLY REPRESENTS A SURVEY MADE ON THE GROUND BY ME, OR UNDER MY SUPERVISION.

Jack Chiles
 JACK CHILES
 R.L.S. #4778